



CATALOG and GUIDE

FOR PORCELAIN DOLLMAKERS

Molds

Porcelain Slip

China Paints

Composition Bodies

Brushes and Tools

Patterns

Worksheets

Mohair Locks

Bisque



Welcome to Seeley's porcelain dollmaking catalog!

How to order:

For a referral to a Seeley product source or to place an order call: 1-800-433-1191 (outside the USA: 1-607-433-1240).

Seeley's Ceramic Service, Inc., 118 Commerce Road, Oneonta, NY 13820

Tel: 1-607-433-1240 • Fax: 1-607-432-2042 • Order: 1-800-433-1191

Email: seeley@seeleys.com • Website: www.seeleys.com

How to read this catalog:

Composition bodies: Bodies are available painted and strung (as shown in photos) or unstrung and unpainted. Please specify when ordering. For composition bodies in another stain color (ex. French Chocolate) see page 61 for list of stains, the minimum order is 12 bodies.



Doll Artisan Guild: An international association dedicated to the education of porcelain Dollmakers. Become a member to get the latest dollmaking education information via the member magazine, DOLLS Beautiful, four times per year; events and competitions around the world and top-notch seminars focused on all aspects of dollmaking for the beginner to advanced hobbyist or professional. Go to: www.DollArtisanGuild.org or call the DAG at 1-607-432-4977 for more information

Guarantee: All products in the catalog are backed by Seeley's and guaranteed to perform as specified. If not completely satisfied with any product, contact your supplier or our Customer Service department.

New dolls/products: since the D52 catalog are all marked "**NEW!**".

On-line catalog: To see all of our dolls in full color, please go to our shopping cart at www.seeleys.com.



Painting instructions: There are instructions for china painting our dolls available. In the text by each doll you will notice either a worksheet listed (WS...) or a back issue of a magazine.

Part numbers: All Seeley part numbers (SKU#) are listed in **BOLD**. Please use these when ordering.



Patterns: Many of the patterns available for each doll are shown either by the doll in the corresponding mold section OR in the composition body section if the doll fits on a composition body. Body patterns are not shown here but may be found on the shopping cart at www.seeleys.com. There is a pattern index in the back of this catalog.

Photos: We would like to thank all the people whose beautiful dolls appear in this catalog. Any dolls shown that are the antique are marked as such. We apologize for any errors in reporting the dollmaker.

Prices: Prices are printed on a separate price list. If it did not come with this catalog, please request one or download the latest price list from www.seeleys.com. Outside the USA, please contact the Seeley's Distributor in your area for prices in your currency.



Website: Seeley's website includes information on all of our products, tech tips, a store locator to find our products easily, Q & A board where you may post questions. You may find information on seminars, events, competitions and education at the Doll Artisan Guild website at: www.DollArtisanGuild.org.

Cover: *Little Greta* by Glenda Martin; *Bléuette Silver* by Alessandra Marcellan Thor. Photos by Gerry Raymonda.

ATTENTION: CATALOG CHANGES SINCE PRINTING:

Please be sure to make these changes to your catalog before ordering to ensure accuracy:

PAGE 5

Celine
Pattern change:
LB223 Bru type body pattern (not LB233)

PAGE 9

Petite Oriental
CP510 Kimono, underwear, obi, socks and sandals pattern
This is available now.

PAGE 11

Arthur
WSGD43 Worksheet available

PAGE 12

Bruder Argerlich
WSGD39 Worksheet available

PAGE 13

Daisy Elmira
WSGD42 Worksheet available

PAGE 14

Lady Jumeau (small E.J. Fashion):
The correct body parts, patterns and worksheet are:
S9110 Shoulder plate mold
AL9408 Arm and leg mold
BP100 Body pattern
MP211 Costume pattern
WSLD12 Worksheet available

Lady Stanhope
WSLD14 Worksheet available

PAGE 15

Mlle Dee
Head mold # in photo is wrong: should be S135

Lady Margaret
WSLD11 Worksheet available

PAGE 19

Oriental Baby
WSBD23 Worksheet available

PAGE 24

Fifi and Carmen
WSPP11 Fifi Worksheet available
WSPP12 Carmen Worksheet available

Pierrot Half Dolls
WSPP16 Worksheet available

Ladies with Hats
WSPP10 Worksheet available

PAGE 26

Sun-Yi
WSMD41 Worksheet available

Inga
WSMD48 Worksheet available

Aruna
WSMD43 Worksheet available

PAGE 44

TB14S photo is wrong
Please refer to on-line catalog for correct photo

PAGE 56

Brush Traveler is discontinued
Rest-A-Brush is discontinued

PAGE 58

Eye Bevelers are discontinued
Please purchase directly from Master Eye Beveler or your nearest Seeley product source

PAGE 59

Doll Master Head Lupe is discontinued
Brush Traveler is discontinued

PAGE 61

Rest-A-Brush is discontinued

PAGE 63

Recreating Bisque Dolls is discontinued

Updated Jan 2006

MOLDS & PATTERNS

French Dolls	2 - 10
German Dolls	10 - 13
Fashion & Lady Dolls	14 - 15
China & Parian Dolls	16 - 17
Baby Dolls	18 - 19
All-Bisque Dolls	20 - 23
Half-Dolls	24
Doll House Dolls	25
Modern Dolls	26 - 32



PORCELAIN, CHINA PAINT

AND GALAXY GLAZE Center

COMPOSITION BODIES & PATTERNS

French	33 - 36
German	36 - 39
Lady & Marque.	39 - 40
Baby.	40 - 42
Modern	42 - 43
ModBod.	43
Toddler	44
SFBJ & Bleurette	44

BODY MOLDS 45 - 48

PORCELAIN SLIP 49

CHINA PAINTS & MEDIA 50 - 51

CHINA PAINT KITS 52 - 53

BRUSHES 54 - 56

TOOLS & SUPPLIES 57 - 61

SOFT-FIRED BISQUE KITS 62

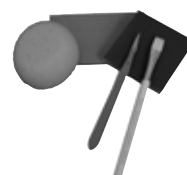
INSTRUCTIONS, WORKSHEETS, BOOKS 63

PATTERN INDEX/CHINA PAINT INDEX 64 - 65

MOLD INDEX 66 - 67

FREQUENTLY ASKED QUESTIONS 68

MOHAIR LOCKS Back Cover



FRENCH DOLLS

Bru *Bébé Bru* dolls were first made around 1875, with articulated, unbreakable composition bodies proportional to a child's body.



Bru Shandele COMES IN 5 SIZES

The most beautiful *Bru* doll ever. Marked: *Bru Jne II*. Pierced ears. Open/closed mouth with molded tongue. Article in: *Doll Artisan* Vol. 16, No. 6, painting worksheet **WSFD14**.

Doll size 24" (61cm), head circ.: 12.25" (31cm), eyes 20mm.
S058 *Bru Shandele* head mold. Wt. 19lbs.
 Fits compo body **FB19S**.

See *French composition body* section for patterns.

For leather or cloth body:

S9058 Shoulder plate mold. Wt. 5lbs.

A9198 Arm mold. Wt. 9lbs.

Patterns for leather or cloth body:

LB223 Body with feet

L13823 Bru frock with jacket

L14323 French frock with variations

Doll size: 20" (51cm), head circ.: 10.75" (27cm), eyes: 18mm
S059 *Bru Shandele II* head mold.

Fits compo body **FB16S**.

See *French compo. body* section for patterns.

Optional body mold **ALB9901** with **A9192** *Bru* arms.

For cloth or leather body:

S9197 shoulder plate mold.

A9197 arm mold.

AL9103 arm/leg mold.

Patterns:

LB219 body with feet.

L13819 Bru frock with jacket,

L14319 French Frock with variations.

Doll size: 15.5" (39.4cm), head circ.: 9" (23cm), eyes: 14mm
S065 *Bru Shandele III* head mold. Wt. 8lbs.

Fits compo. body **FB12S**.

See *French compo. body* section for patterns.

For leather or cloth body:

S9111 Shoulder plate mold.

A9195 Arm mold.

L9195 Leg mold.

Patterns for cloth or leather body:

LB216 Body with feet.

L13816 Bru frock with jacket

L14316 French frock with variations.

LH11 Frilly bonnet.

Milette version:

Doll size: 10-11" (25-28cm), head circ.: 6" (15.25cm), eyes: 10mm

S094 *Bru Shandele IV* head mold.

See *Milette* section for details.

Petite version:

Doll size: 7.5" (19cm), head circ.: 4.75" (12cm), eyes: 6-8mm

S350 *Petite Bru* head mold.

See *Petite* section for details.



Bru Solange

Bru Jne 13. Marked: *13*. Solange can have porcelain shoulder plate, arms and legs, a composition body or variations. Body pattern comes with two different styles: one for a cloth body and one for an authentic Chevrot style leather body. Pierced ears, open-closed mouth. Articles: *Doll Artisan* Vol. 22, No. 1 and Vol. 23, No. 1. Reference: Theriault's Catalog #1016, #222 (Nov 11, 2000)

Doll size: 27" (68.5cm), head circ.: 13.75" (35cm), eyes: 22-24mm

S342 *Bru Jne 13* Solange head mold. Wt. 28lbs.

ALS9342 Bru shoulder plate, arm and leg mold set. (3 molds) Mold wt. 33lbs.

BP93 Bru cloth and Chevrot style body pattern.

CP2005 Dress, underwear pattern (**BP93**)

(shown on doll)

L9344 Optional leg mold for compo. legs.

BRULLEG27 Optional Composition Lower Leg.

FB21.5S Optional French Compo. Body.

See *French compo. body* section for patterns.



Brevete

One of the earliest and most beautiful Brus (from 1879). Marked: 6, sometimes called Brevette. Long eyelashes and pierced ears. Painting instructions on worksheet **WSFD29**.

Doll size: 17" (43cm), head circ.: 9.25" (23cm), eyes: 14-16mm,

S324 *Bru Brevete* head mold. Wt. 7lbs.

FB14S 14" French composition body.

Patterns for **FB14S**:

See *French composition body* section

For leather or cloth body:

S9228 Shoulder plate mold. Wt. 7lbs.

A9196 Arm mold. Wt. 6lbs.

Patterns for leather or cloth body:

LB219 Body with feet

L13819 Bru frock with jacket

L14319 French frock with variations

CP506 Bretelle dress with variations

(for photo, see *French compo. body* section for **FB14S**)

Pattern on doll not available.

OTHER BRU DOLLS AVAILABLE, BUT NOT PICTURED:

For patterns, see *composition body* section.

NAME	HEAD MOLD #	MARKING	DOLL SIZE	EYES	HEAD CIRC.	BODY INFO	WORKSHEET/REFERENCES
<i>Bru Melinda</i>	S122	none	17" (43cm)	14mm	10" (25.5cm)	FB14S	Article: <i>Doll Artisan</i> Vol. 22, No. 5
<i>Circle Dot Bru Colombine</i>	S126	Circle and a dot	20" (51cm)	18-20mm	11.5" (29cm)	FB16JWS FB16JWSFC ALB9901 Or cloth body	Worksheet: WSFD38 Article: <i>Doll Artisan</i> Vol. 17, No. 1
<i>Circle Dot Bru Estelle</i>	S112	Circle and a dot	15.5" (39cm)	14mm	8.5" (21cm)	FB12S	Worksheet: WSFD38 Article: <i>Doll Artisan</i> Vol. 17, 1, Vol. 21, No. 1; Vol. 22
<i>Angelica Bru Têteur</i>	S220	none	13" (33cm)	12-14mm	8" (20cm)	SFB10S, FB10S or S9106 , A9193, A9199 L9102, BP25	Article: <i>Doll Artisan</i> Vol. 21, No. 2

Optional molds for porcelain Bru arms and legs to add to composition bodies:

For **FB10S**: **A9193** Arm mold. Wt. 4lbs.

For **FB12S**: **A9195** Arm mold. Wt. 4lbs. and **L9195** Leg mold. Wt. 5lbs.

For **FB14S**: **A9196** Arm mold. Wt. 6lbs. and **OED3007L** Leg mold. Wt. 8lbs.

For **FB16S**: **A9197** Arm mold. Wt. 10lbs.

For **FB16JS**: **A9192** Arm mold. Wt. 10lbs.

For **FB17S** & **FB19S**: **A9198** Arm mold. Wt. 9lbs.

Jumeau Emile Jumeau was the most successful bisque doll manufacturer during the last quarter of the 1800s. He was the son of Pierre François Jumeau, who founded the company around 1842. All Jumeau heads were pressed, not cast. From the early 1890s, Jumeau made black and brown dolls.



Arielle COMES IN 5 SIZES

The world's all-time favorite Tête Jumeau. A classic. Marked: *Deposé Tête Jumeau, Bte SGD G 15*. Pierced ears. References: Worksheet for French Dolls, **WSFD18**; *Doll Artisan*, Vol. 15, Nos. 1, 2; Vol. 20, No. 2 and Vol. 23, No. 6.

Doll size: 28, 30" (71, 76cm), head circ.: 16" (41cm), eyes: 24mm

S075 Jumeau Arielle head mold. Wt. 25lbs.

Fits **FB21.5S**, **FB230S** and **FB24S** French composition bodies.

For patterns, see French composition body section.
Optional body mold: **OED3077**.

Doll size: 24" (61cm), head circ.: 13.75" (35cm), eyes: 22mm

S078 Jumeau Arielle II head mold. Wt. 20lbs.

Fits **FB18S** French composition body.

For patterns, see French composition body section.
Optional body mold **OED3072**.

Hat pattern: **LH23** Victoria Bonnet

Doll size: 21" (53.3cm), head circ.: 11.75" (30cm), eyes: 18mm

S080 Jumeau Arielle III head mold. Wt. 13lbs.

Fits **FB16JS** French composition body.

For patterns, see French composition body section.
Optional body molds **ALB9901**, **OED3075**

Millette version

Doll size: 10" (25cm), head circ.: 6.25", eyes: 10mm

S095 Jumeau Arielle IV head mold. Wt. 3 lbs.

See page 8 for details.

Petite version

Doll size: 7.5" (19cm), head circ.: 4.75" (12cm), eyes: 6-8mm

S351 Petite Jumeau head mold.

See page 9 for details.

Portrait Jumeau - Stobé

Doll size: 19" (48cm) as lady, 16" (41 cm) as child.

Head circ: 9" (23cm), eyes: 12-14mm

S26H Stobé head mold. Wt. 7lbs.

See Fashion and Lady section for details



Christinne

New Jumeau marked: *E14J*. Pierced ears through the lobes. Article in *DOLLS Beautiful* 2003-2 magazine. Worksheet for French dolls **WSFD9**.

Doll size: 27" (68.5cm); head circ.: 14.5" (37cm); eyes: 22mm

S370 Christinne head mold. Wt. 25lbs.

Fits **FB21.5S** French composition body.

CP2006 Long waisted dress with French drape (hat not included) (*shown on doll*)

For more patterns, see French composition body section.



EJ Camille COMES IN 2 SIZES

Meltingly beautiful, large, *Emile Jumeau* doll. Made in France around 1880. Marked: *Depose E 12 J*. Pierced ears. Separate ear mold for authentic re-creation. Articles: *Doll Artisan* Vol. 15, No.3 and Vol. 18, No. 5 or worksheet **WSFD9**.

Doll size: 22" (56cm), head circ.: 12" (30cm), eyes: 20mm

S185ST *EJ. Camille* head and ear molds. Wt. 14lbs.

Fits **FB17S** 17" French composition body.

For patterns, see French composition body section.
Optional body mold: **OED3072**.

Doll size: 17" (43cm), head circ.: 10.25" (26cm); eyes: 18mm

S253ST *EJ Camille II* head mold (2 molds). Wt. 7 lbs.

Fits **FB14JS** French Composition body.

For patterns, see French composition body section.



Lyric COMES IN 3 SIZES

Precious Jumeau Bebe with long, alluring eyelashes. Marked: *Depose Tete Jumeau, Bte SGD G*. Pierced ears. References: Worksheet for French Dolls, **WSFD23**; *Doll Artisan* Vol. 15, No. 6; *King, Jumeau*, pg.45 (brown version).

Doll size: 16" (41cm), head circ.: 9" (23cm), eyes: 14-16mm,

S123 Jumeau Lyric head mold. Wt. 9lbs.

FB12JS 12" French composition body with Jumeau style hands.

For patterns, see French composition body section.

Millette version

Doll size: 10" (25cm), head circ.: 6 1/4", eyes: 10mm

S198 Lyric Millette head mold. *See Millette section for details.*

Petite version

Doll size: 7.5" (19cm), head circ.: 4.75" (12cm), eyes: 6-8mm

S352 Petite Jumeau Lyric head mold.

See Petite section for details.



Bébé Louvre

Lovely Jumeau, probably made for the French department store, Louvre. Pierced ears. Marked: *L11*. References: Worksheet for French Dolls **WSFD19**; *Doll Artisan* Vol. 15, No. 2, Vol. 19, No. 1.

Doll size: 18" (46cm), head circ.: 10 1/4" (26cm), eyes: 16mm

S118 Bebe Louvre head mold. Wt. 8lbs.

Fits **FB14S** 14" French composition body and **FB14JS**

14" French composition body with Jumeau hands and **FWB14** 14" French walking body. *For patterns, see French composition body section.*



Doll by Kitty Mucks

☞ *Long Face Jumeau* COMES IN 3 SIZES

With longish cheeks and dreamy eyelids, she is called *Jumeau Triste* or *Cody Jumeau*. Pierced ears. Incised: 13. References: Worksheet for French Dolls, **WSFD7**; *Doll Artisan*, Vol. 20, No. 1.

Doll size: 25" (64cm), head circ.: 13 1/2" (34cm), eyes: 21-22mm

S179 Long Face Jumeau head mold. Wt. 23lbs.

Fits **FB18S** French composition body. *For patterns, see French composition body section.*

Optional: **OED3072** Body mold.

Doll size: 21" (53cm), head circ.: 11.75", eyes: 18mm

S180 Long Face II head mold. Wt. 15lbs.

Fits **FB16JS** French composition body with Jumeau style hands. *For patterns, see French composition body section.*

Optional: **ALB9901** Body mold.

Doll size: 18" (46cm), head circ.: 10", eyes: 14-15mm

S187 Long Face IIB head mold. Wt. 11lbs.

Fits **FB14S** French composition body and **FB14JS** 14" French composition body with Jumeau hands.

For patterns, see French composition body section.

OTHER JUMEAU DOLLS AVAILABLE, BUT NOT PICTURED:

For patterns, see composition body section.

NAME	HEAD MOLD #	MARKING	DOLL SIZE	EYES	HEAD CIRC.	BODY INFO	WORKSHEET/REFERENCES
Portrait Jumeau Pauline	S189	4	13" (33cm)	14mm	7" (18cm)	FB10JS	Worksheet: WSFD25 Article: <i>Doll Artisan</i> Vol. 16, No. 3; Vol. 19, No. 4
Bebe Francois	S339	B I I F	17" (43cm)	16mm	10.5" (26.5cm)	FB14S, FB14JS	Worksheet: WSFD5 Article: <i>Doll Artisan</i> Vol. 19, No. 5
E.J. Simonne	S129	E J A I	24" (61cm)	22mm	12.25" (26.5cm)	FB17S OED3072	Worksheet: WSFD35 Article: <i>Doll Artisan</i> Vol. 20, No. 4

Steiner



S025H/S039H

☞ *Julie & Celeste C-Steiner*

Wonderful Steiner from C-series, around 1885, Marked: Sie C 2. Pierced ears. References: Worksheet for French Dolls **WSFD13**.

Doll size: 17" (43cm), head circ.: 10.25" (26cm), eyes: 16mm,

S025H Julie Steiner head mold. Wt. 9lbs.

Fits **FB14S** French composition body. *For patterns, see French composition body section.*

Doll size: 15" (38cm), head circ.: 9.5" (24cm), eyes: 14mm

S039H Steiner Celeste head mold. Wt. 10lbs.

Fits **FB12S** French composition body. *For patterns, see French composition body section.*

OTHER STEINER DOLLS AVAILABLE, BUT NOT PICTURED:

For patterns, see composition body section.

NAME	HEAD MOLD #	MARKING	DOLL SIZE	EYES	HEAD CIRC.	BODY INFO	WORKSHEET/REFERENCES
Steiner Kahlie (see Milette pg for photo)	S081	A 19 Paris, Le Parisien	24, 27" (61, 68cm)	20mm	13.25"	FB18, FB21.5S	Worksheet: WSFD27 Article: <i>Doll Artisan</i> Vol. 16, No. 5.
Chanelle	S192ST	Sie C 8	29" (74cm)	26mm	17" (43cm)	FB230S, FB24S	Worksheet: WSFD20 Article: <i>Doll Artisan</i> Vol. 15, No. 3; Vol. 15 No. 6; Vol. 23 No. 4.
Chanelle II	S193ST	Sie C 8	23" (58cm)	22-24mm	14" (36cm)	FB17S, FB18S, FB19S, OED3072	Worksheet: WSFD20

AT A.Thuiller made exceptional dolls during the last quarter of the 1880s.



S031H/S033H

☞ *A.T. Merilie & Rentille*

Doll by A. Thuillier from last quarter of 1880s. Open mouth w. teeth, or closed mouth. Marked: A 14 T. Pierced ears. Reference: French Dolls; Worksheet for French Dolls **WSFD34**; *Doll Artisan*, Vol. 20, No. 2.

Doll size: 24, 27" (61, 68cm), head circ.: 13" (33cm), eyes: 20mm

S031H A.T. Merilie head mold. Wt. 17lbs.

Fits **FB18S** and **FB21.5S** French composition bodies. *For patterns, see French composition body section.*

OED3072 Optional body mold.

Doll size: 17" (43cm), head circ.: 10" (25.5cm), eyes: 16mm

S033H A.T. Rentille head mold. Wt. 12lbs.

FB14S French composition body. *For patterns, see French composition body section.*



Celine

Beautiful French doll with wistful innocence, originally by A. Thuillier, circa 1880. Marked: A I I T. Closed mouth with modeled white space between shaded and accented lips. Pierced ears. Has been found with blue, gray and brown paperweight eyes. Reference: In Aug/Sept '99 *Doll Artisan* magazine. Worksheet: **WSFD37** (Aug/Sept 1999 *Doll Artisan*).

Doll size: 22" (55.75cm), head circ. 11.75" (30cm), eye size: 20mm

S345 Celine head mold. Wt. 10lbs.

Fits:

FB175 French composition body. For patterns, see *French composition body section*.

ALS9345 Celine arms, legs and shoulder plate mold. Wt. 27.5lbs.

Pattern for cloth/leather body:

LB233 Bru type body pattern.

LI3823 Bru frock with jacket 1886-style.

OTHER JUMEAU DOLLS AVAILABLE, BUT NOT PICTURED:

For patterns, see *composition body section*.

NAME	HEAD MOLD #	MARKING	DOLL SIZE	EYES	HEAD CIRC.	BODY INFO	PATTERN	WORKSHEET/REFERENCES
Desirée	S093	A 9 T	20" (51cm)	16mm	10" (25cm)	FB16S	CP603	Worksheet: WSFD8

SFBJ and Bleuette The Société Française de Fabrication de Bébés et Jouets (S.F.B.J.), which means French Society for the Manufacture of Dolls and Toys, was formed in 1899 to compete with German dollmaking companies. Eight French doll and toy factories, including Jumeau and Gaultier, comprise the Société. Many of the molds used had been created earlier by Jumeau. Some of the dolls made by S.F.B.J., including Joy, bear the UNIS France mark. The initials U.N.I.S. stand for Union National Inter-Syndicale.



Bleuette Gold

She can be painted up to two different ways. Doll can have painted lower lashes with mohair upper lashes OR painted slanted upper and lower lashes. Molded teeth, open-mouth. Article in *DOLLS Beautiful* 2003-4. Marked: "22 D S.F.B.J. 60 PARIS - 3 -"

Doll size: 10 5/8" (27cm), head circ.: 6 5/8" (16.8cm), eyes: 12mm flat glass

S369 Bleuette Gold head mold. Wt. 3 lbs.

WSFD42 Worksheet.

Bleuette Jumeau

This was the first *Bleuette* from 1905, known as "Premier Bleuette" or the *Bleuette Jumeau*. Doll is incised with a 1 over a 2 and is painted very much like a Jumeau. Pierced ears, paperweight eyes and open mouth with four teeth. Article in *DOLLS Beautiful* 2003-2.

Doll size: 10.25" (26cm), head circ.: 7" (18cm), eyes: 10mm paperweight

S366 Bleuette Jumeau head mold. Wt. 4 lbs.

WSFD40 Bleuette Jumeau worksheet.



Bleuette Silver

French SFBJ 301, circa. 191, open-mouth. Four-page worksheet has instructions for china painting, making her porcelain teeth, making her mohair upper lashes and extensive history and costuming information.

Doll size: 10 5/8" (27cm), head circ.: 6.75" (17cm), eyes: 8mm round glass

S365 Bleuette Silver head mold. Wt. 4 lbs.

WSFD39 Bleuette Silver 4-page worksheet.



Bleuette Doll Body, patterns and supplies:

Two body options:

SFBJ775S SFBJ Composition Body.

SFBJ775AS SFBJ Composition Body with Jointed Wrists

PATE1 Cork pate.

SC335 Teeth mold. (optional)

Patterns:

CP323 Wardrobe: 5 dresses, nightgown, coat, jacket, pinafore, 3 pairs of shoes, 3 purses, 4 hats, socks and complete underwear (underwear includes corset, corset cover, petticoat and drawers). (Shown on Bleuette Silver dolls.)

CP324 Dress, hat, and shoes. (Shown on Bleuette Jumeau doll.)

CP325 Collared smock and dress with pockets (Shown on Bleuette Gold dolls)



☞ Suzanne

Large Jumeau girl with almost smiling open mouth and upper teeth. Dates before 1910, and one of SFBJ's finest dolls. Pierced ears. Painted lower lashes, upper hair lashes. Marked: SFBJ 301 Paris 14. Article in *DOLLS Beautiful* 2003-4.

Doll size: 28" (71cm); head circ.: 14.5" (37cm); eyes: 24mm

OED3066 Suzanne head mold. Wt. 25 lbs.

Fits **FB21.5S** French composition body. For patterns, see *French composition body* section.

WSFD11 Worksheet.

(Pattern on doll not available)

OTHER SFBJ DOLLS AVAILABLE, BUT NOT PICTURED:

For patterns, see *composition body* section.

NAME	HEAD MOLD #	MARKING	DOLL SIZE	EYES	HEAD CIRC.	BODY INFO	WORKSHEET/REFERENCES
Joy	S333	UNIS France 301	20" (51cm)	10-20mm	12" (30.5cm)	FB16S, ALB9901	Worksheet: WSFD31 Article: <i>Doll Artisan</i> Vol. 18, No. 6.
Joy II	S334	UNIS France 301	17" (43cm)	14mm	8.75" (24.75cm)	FB14S, FWB14 FMB14	Worksheet: WSFD31 Article: <i>Doll Artisan</i> Vol. 18, No. 6.
Pouty Twirp	S255	France, SFBJ, 247, Paris	21" (53cm)	18mm	12.75" (32.5cm)	BB16SS, TB16.5S,	Worksheet: WSFD16 Article: <i>Doll Artisan</i> Vol. 21 No. 4 and Vol. 24 No. 2.

Misc. French



H-Doll, Helene COMES IN 3 SIZES

One of the most valuable dolls in the world. Made in France in the 1880s, by Aristide Marcellin Halopeau. Marked: 5 H, she is the largest size known. Pierced ears. Worksheet for French Dolls, **WSFD12**. Article: *Doll Artisan*, Vol. 17, No. 6.

Doll size: 21" (53cm), head circ.: 11.5" (29cm); eyes: 18mm
Optional body mold: **ALB9901**.

S171 H-Helene head mold. Wt. 18lbs.

Fits **FB16JWS** French composition body with Jumeau style hands.

For patterns, see *French composition body* section.

Doll size: 18" (46cm), head circ.: 9.75" (25cm); eyes: 16mm

S173 H-Helene II head mold. Wt. 10lbs.

Fits **FB14S** French composition body.

For patterns, see *French composition body* section.

Doll size: 16" (41cm), head circ.: 8.25" (21cm); eyes: 14mm

S174 Helene III head mold. Wt. 7lbs.

Fits **FB12S** French Composition body.

For patterns, see *French composition body* section.



PAN COMES IN 3 SIZES. See Petite section for smallest size.

A stunning doll in exquisite authentic costume. One-of-a-kind French doll made during the 1880's, possibly by Henri Delcroix. Marked: Paris PAN 10. Pierced ears. Worksheet: **WSFD4**. Article: *Doll Artisan*, Vol. 12, No. 2.

Doll size: 21" (53cm), head circ.: 11 3/4" (30cm); eyes: 20mm

S182 PAN head mold. Wt. 19lbs.

Fits **FB16JWS** French composition body with Jumeau style hands.

For patterns, see *French composition body* section.

Optional body mold: **ALB9901**.

Doll size: 18" (45.75cm), head circ.: 10" (25.4cm); eyes: 16-17mm

S183 Pan II head mold. Wt. 15lbs.

Fits **FB14S** French compo. body.

For patterns, see *French composition body* section.



A. Marque COMES IN 4 SIZES. For Milette and Petite size information, see corresponding section.

Captivating character doll, created by the French sculptor Albert Marque in 1915. Extremely rare. Marked: A. Marque. Pierced ears. References: Worksheet: **WSFD32**. Articles: *Doll Artisan*, Vol. 17, No. 6; Vol. 18, No. 6; Vol. 19, No. 1; Vol. 19, No. 2.

Doll size: 18" (46cm); head circ.: 10" (25cm); eyes: 14mm

S169 Large Marque head mold. Wt. 18lbs.

Fits **M15S** 15" Marque composition body.

Patterns:

CP706 A. Marque Suit (shown on doll on left)

CP707 A. Marque Dress (shown on doll on right)

For more patterns, see *Marque composition body* section.

Optional for **M15S**: **A9169** Arm mold, **L9169** Leg mold

Also fits **FB16S** French composition body.

For patterns, see *French composition body* section.

Doll size: 18" (46cm); head circ.: 9.5" (24cm); eyes: 12mm

S372 Large A. Marque la head mold. Wt. 18lbs.

Fits new authentic-style Marque body, **M145S** 14.5"

Marque composition body.

Optional for **M145S**: **A9372** Arm mold, **L9372** Leg mold

Pattern for **M145S**: **CP708** Costume pattern

(coming soon)

NEW!



☞ *Bébé Charmant*

Doll by Pintel & Godchaux. Marked: *B P10G* Pierced ears. Article: *Doll Artisan* Vol. 23 No. 2. or worksheet **WSFD36**.

Doll size: 17" (43cm); head circ.: 9.5" (24cm); eyes: 16-18mm
DAG970 *Bébé Charmant* head mold. Mold wt. 9 lbs.

Fits **FB14S** French compo. body.

CP508 Costume pattern. (*shown on doll*)

For more patterns, see French composition body section.

Also available as Milette, see Milette section.

F.G. Claudette

By Francois Gaultier. Pierced ears, open-closed mouth. Makes a great pair with Jean Claude. Serious face with full cheeks. Marked: *F.G. 6*.

Reference: Worksheet for French Dolls **WSFD2**.

Doll size: 27,29" (69,74cm), head circ.: 15.25" (39cm), eyes: 22mm

S018 *Claudette* head mold. Wt. 26lbs.

Fits **FB21.5S** and **FB230S** French compo. bodies. *For patterns, see French composition body section.*



☞ *R.D. Molinne*

Ravishing, large bebe of unusual beauty. Pierced ears. Made by Rabery & Delphieu around 1890. Marked: *R S D*.

Painting worksheet available, **WSFD15**. Fits composition bodies: **FB18S** and **FB21.5S**.

Doll size: 24", 27" (61, 69cm), head: 14.5" (36.5cm), eyes: 22mm

S164 *RD Molinne* head mold. Wt. 34 lbs.

For patterns, see French composition body section.

Smaller sizes are available, please inquire.



Eden Bébé

Made by Fleischmann & Blodel in the late 19th century. Marked *Eden Bébé Paris*. Closed or open mouth with teeth. Pierced ears. Article: *Doll Artisan* Vol. 19, No. 1 or worksheet **WSFD33**.

Doll size: 23" (58cm); head circ.: 13" (33cm); eyes: 20-22mm

S335 *Eden Bebe* head mold. Wt. 13lbs.

FB18S French composition body. *For patterns, see French composition body section.*

OED3072 Optional body mold.

OTHER FRENCH DOLLS AVAILABLE, BUT NOT PICTURED:

For patterns, see composition body section.

NAME	HEAD MOLD #	MARKING	DOLL SIZE	EYES	HEAD CIRC.	BODY INFO	PATTERN	WORKSHEET/REFERENCES
Phenix Bebe	S082	<i>94 and star</i>	17" (43cm)	16mm	9.5" (24cm)	FB14S	CP501, CP506, LI15817, MP34	Worksheet: WSFD22 Article: <i>Doll Artisan</i> Vol. 18, No. 1.
Phenix Bebe III	S085	<i>94 and star</i>	13" (33cm)	12mm	7" (18cm)	FB10S	LI1612, CP450, CP407	Worksheet: WSFD22 Article: <i>Doll Artisan</i> Vol. 18, No. 1.
F.G. Jean Claude	S017	<i>F.G. 10</i>	32" (81cm)	26mm	16.25" (41cm)	FB24S, OED3077	CP1601	Worksheet: WSFD21 Article: <i>Doll Artisan</i> Vol. 15, No. 5.
Schmitt Lily	S156	<i>SCH</i>	21, 24" (53, 61cm)	20mm	11.5" (29cm)	FB16JWS, ALB9901, FB17S, LB195S	LI15320, CP606, LI15322	Worksheet: WSFD1 Article: <i>Doll Artisan</i> Vol. 22, No. 6.
Schmitt Lillette	S181	<i>SCH</i>	17" (43cm)	18mm	10" (25cm)	FB14S	CP501, CP506, LI15817, MP34	Worksheet: WSFD1 Article: <i>Doll Artisan</i> Vol. 22, No. 6.
Paris Bebe Danielle	S153	<i>12 Paris Bebe, Tete Depose</i>	24, 27" (61, 68cm)	22mm	13.5" (34cm)	FB17S, FB18S, FB19S, OED3072	LI15323, LS16, LH23	Worksheet: WSFD6 Article: <i>Doll Artisan</i> Vol. 24, No. 3.
Paris Bebe Danielle II	S154	<i>12 Paris Bebe, Tete Depose</i>	20" (51cm)	20mm	11.25" (29cm)	FB16JS, ALB9901, OED3075	LI15320, LS16	Worksheet: WSFD6 Article: <i>Doll Artisan</i> Vol. 24, No. 3.

Millettes Cabinet size French dolls: 10-11" (25-28cm). They fit the same bodies, use the same costume patterns, wigs, eyes, and can be made either with cloth/leather body, composition body or all-porcelain body.



A.T. Silver

Beloved A.T. by A. Thuillier. Marked: A3T. Pierced ears.

Head circ.: 6.25" (16cm); eyes: 10mm

S087 A.T. Silver head mold. Wt. 5lbs.

Fits **FB7S** and **FB8S** French composition bodies.



Jumeau Arielle IV

All-time favorite Jumeau model. Marked: *Depose Tete Jumeau, Bte SGDG*. Pierced ears. Worksheet **WSFD18**

Head circ.: 6.25" (15.75cm); eyes: 10mm

S095 Jumeau Arielle IV head mold. Wt. 3 lbs.

Fits **FB7S** and **FB8S** French composition bodies.



E.J. Dollin

Splendid E.J. by Emile Jumeau. Pierced ears. Incised: *Depose A E3J X*. Article: *Doll Artisan* Vol. 15, No. 1.

Head circ.: 6.5" (16.5cm); eyes: 10mm

S092 E.J. Dollin head mold. Wt. 4lbs.

Fits **FB8S** French compo. body



A. Marque III

Rare French character doll made by and marked *A. Marque*. Boy and girl from same mold. Pierced ears. Worksheet **WSFD32**.

Head circ.: 6.25" (16cm); eyes: 10mm

S152 A. Marque III head mold. Wt. 3lbs.

Fits **FB7S** and **FB8S** French composition bodies.

Bru Shandele IV

For photo see page 2

The finest mold that Bru ever made.

Marked: *Bru Jne*. Pierced ears. Worksheet **WSFD14**.

Head circ.: 6" (15.25cm); eyes: 10mm

S094 Bru Shandele IV head mold.

Fits **FB7S** and **FB8S** French composition bodies.

Bébé Charmant Milette

For photo see page 7

Beautiful French Milette size doll by Pintel & Godchaux. Pierced ears. Marked: *B P10G*. Worksheet **WSFD33**

Doll size: 11" (28cm), Head circ.: 6.75" (17.25cm), eyes: 10mm

S343 Bébé Charmant Milette head mold. Wt. 3lbs.

Fits **FB8S** French compo. body.



CP1104



LI1611



LI4710

Milette Doll Bodies and Patterns:

Doll can be put on a composition body, all porcelain body (with body mold) or cloth body with porcelain arms, legs and shoulder plate.

FB8S French composition body

FB7S French composition body

ALB9200 Milette Body Mold. Wt. 17lbs.

For cloth or leather body:

S9087 Shoulder plate mold. Wt. 2lbs.

LAL9200 Lower arms/legs

mold. Wt. 5 lbs.

BP57 Cloth body pattern.

Costume patterns:

LH11 Frilly Bonnet

LI4710 Milette wardrobe: six variations, includes underwear, apron (**FB7S**)

CP1102 Marque boy: jacket, shirt, pants, boots, leggings (**FB7S**)

CP1103 Marque girl: dress, jacket, underwear, hat (**FB7S**)

CP1104 Dress, slip, drawers (**FB8S**)

LI1611 French frock with

apron, underwear (**FB8S**)

MP31 Socks and crocheted

socks (**FB8S**)

Jumeau Lyric

Precious bébé with longish eye-lashes. Marked: *Depose Tete Jumeau, Bte. SGDG*. Pierced ears. Worksheet **WSFD23** Article: *Doll Artisan*, Vol. 15, No. 6.

Head circ.: 6.25" (15.75cm); eyes: 10mm

S198 Lyric Milette head mold. Wt. 4lbs.

Fits **FB7S** and **FB8S** French composition bodies.



Steiner Kahlie V

Precious bébé from around 1890 by J.N. Steiner. Marked: *Paris, Le Parisien A19*. Pierced ears. Article: *Doll Artisan* Vol. 16, No. 5 or Worksheet **WSFD27**.

Head circ.: 6.5" (16.5cm); eyes: 10mm

S99 Steiner Kahlie V head mold.

Wt. 4lbs.

Fits **FB8S** French compo. body.



RD Mora

Doll by Rabery and Delphieu, of France.

Marked: *R5/0D*. Pierced ears. Article in *Doll Artisan* Vol. 24 No. 5. Worksheet **WSFD15**.

Doll size: 10.5" (26.5cm), eyes: 10mm, head circ.: 6.5" (16.5cm)

S88 R.D. Mora head mold. Mold

wt. 4 lbs.

Fits **FB7S** and **FB8S** French composition bodies.



FG Lana

Doll by Francois Gaultier, marked *F3G*. Pierced ears.

Head circ.: 6.25" (15.75cm); eyes: 10mm

S091 FG Lana head mold.

Mold. Wt. 6 lbs.

Fits **FB7S** and **FB8S** French composition body.



NEW! **Petites** The "Petite" series 7.5" (19cm) French dolls will warm your heart – and fill the small spaces in your doll cabinet! They all fit the same body and patterns. Doll size: 7.5" (19cm), head circ.: 4.75" (12cm), eyes: 6-8mm.



Petite EJ

S347 Petite EJ head mold.
WSFD38 EJ Worksheet.
Reference: *Doll Artisan* Vol. 23 No. 1.



Petite AT

S348 Petite AT head mold.
WSFD37 AT Worksheet.



Petite Laughing Jumeau

S349 Petite Laughing Jumeau head mold.
WSFD24 Laughing Jumeau Worksheet.



Petite Bru

S350 Petite Bru head mold.
WSFD14 Bru Worksheet.



Petite Jumeau

S351 Petite Jumeau head mold.
WSFD18 Jumeau Worksheet.



Petite Jumeau Lyric

S352 Petite Jumeau Lyric head mold.
WSFD23 Lyric Worksheet.



Petite Screamer

S353 Petite Screamer head mold.



Petite A Marque

S354 Petite A. Marque head mold.
WSFD32 A Marque Worksheet.



Petite Steiner Kahlie

S355 Petite Steiner Kahlie head mold.
WSFD27 Steiner Worksheet.



Petite FG

S356 Petite FG head mold.
Reference: *Millettes* book by M. Seeley.



Petite RD



Petite PAN

S361 Petite PAN head mold.
WSFD4a Worksheet.



Petite Oriental

S359 Petite Oriental head mold.
WSLD8 Worksheet.
New kimono pattern coming soon.

Petite Doll Bodies and Patterns:

FB550S 5.5" French composition body.
A9300B Bru Lower Arms mold. (optional)
ALB9300 5.5" Body mold. (optional)

Patterns for FB550S:

CP948 French frock, underwear and leather shoes.
(shown on **S347** Petite EJ)

CP1202 Petite Wardrobe: Two dresses, dance outfit and boy's suit. (Wardrobe shown on **S349**, **S350**, **S353**, **S355**)

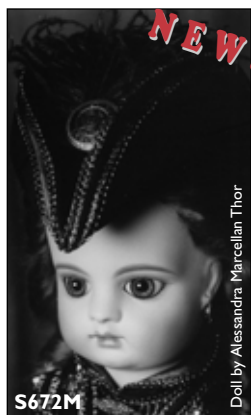
Mechanical Moving dolls that stand on a wooden base; also called Automaton. Made in France 1880-1915. These head molds were specially adapted to fit on the mechanical body. Doll size: 17"-18" (43-45.75cm), head circ: 10-10.25" (25-26cm), eyes: 16mm.



Brigitte Jumeau

Classic Long Face Jumeau doll.

S661M Brigitte Jumeau head mold.
Worksheet: **WSFD7**
(wearing **MP201**)



FG Mechanical

Classic, round-faced French F.G. Marked: *FI IG*. Pierced ears.

S672M FG Mechanical head mold.
Wt. 9lbs.
WSFD10 FG Worksheet.



Margareta H-Doll

Exquisite H-doll. Articles in: *Doll Artisan* Vol. 17, No. 6 and Vol. 19, No. 5.

S663M Margareta head mold.
Wt. 9lbs.
WSFD12 Worksheet.
(wearing **MP203**)



Mechanical Body

13" (33cm) composition body with music box in torso, on base. Head turns from side to side; arms move up and down. Solid maple base with beveled edges. 6" x 6" x 1/2" (15 x 15 x 2cm) Complete instructions included.

FMB14* Mechanical Body.

***Add letter code for music choice:**

SL=Swan Lake
BD=Blue Danube
SB=Sleeping Beauty
E=Edelweiss
O=O Tannenbaum.

OTHER MECHANICAL DOLLS AVAILABLE, BUT NOT PICTURED:

For patterns, see composition body section.

NAME	HEAD MOLD #	DOLL SIZE	EYES	HEAD CIRC.	WORKSHEET/REFERENCES
Christina	S662M	18" (45.75cm)	16mm	10" (25cm)	Worksheet: WSFD22 , Article: <i>Doll Artisan</i> , Vol. 17, No. 6; Vol. 19, No. 2.
Carl Gustaf	S665M	18" (45.75cm)	16mm	10" (25cm)	Worksheet: WSFD21 , Article: <i>Doll Artisan</i> , Vol. 21, No. 1.
Desirée (see Arielle photo)	S671M	18" (45.75cm)	16mm	10" (25cm)	Worksheet: WSFD18 , Article: <i>Doll Artisan</i> , Vol. 20, No. 5

Molds for arms:

Lower porcelain arms easily attach to body's bendable wire arms.

A9659M Jumeau Arms Mold. Wt. 4lbs.
A9658M Bru Arms Mold. Wt. 4lbs.

Patterns:

MP201 1890 Lambert costume includes jacket, dress, hat, bloomers, base cover. (shown on **S661M** Brigitte)

MP202 Socks and Shoes with variation.

MP203 Nutcracker/soldier costume, boy or girl. (shown on **S663M** Margareta)

GERMAN DOLLS

Annettes Small J.D. Kestner Dolls — We have a set of five of J.D. Kestner's Wunderpuppe dolls (Miracle Dolls) which were patented in 1909. They all fit the same body, wigs and eyes (painted or glass). We call them Annettes. All of the antiques were packaged in a colorful box. Details can be found in the *Doll Artisan* magazine Vol. 18, No.3 (March/April 1995) Vol. 18, No. 5 (July/August 1995) on the history. Head circ. 5.25"-5.75" (14-14.5cm), Eyes 8mm, Doll size 8.25" - 9" (22-23cm).



Amanda

This delightful little lady is marked: 185. Dimpled cheeks and a wide smile with four molded teeth, open-closed mouth. Upper and lower lashes on glass eyed version, upper lashes on painted eye version. Article in *Doll Artisan* Vol. 18, No. 5.

S329 JDK 185 Amanda head mold.
Wt. 3lbs.
WSGD35 Worksheet.



Joe/Josephine

Rare doll with painted eyes, dimpled chin. Marked: 184. Article in *Doll Artisan* Vol. 18, No. 3.

S327 Kestner Joe/Josephine head mold. Wt. 2lbs
WSGD33 Worksheet



Meg

Open mouth, four molded upper teeth and dimpled chin. Marked: *C Made in Germany 3 174*. Article in *Doll Artisan* Vol. 18 No. 3.

S328 Kestner Meg head mold. Wt. 2lbs.



Stephen/Stephanie

Boy or girl. Long slender nose, open/closed mouth, molded eyelids, defined iris and pupil. Marked: 178. Painted or glass eyes. Article in *Doll Artisan* Vol. 18, No. 5.

S330 JDK 178 Stephen/Stephanie head mold. Wt. 2 lbs.
WSGD35 Worksheet.

See next page for body and pattern information



CP9003

Elita

Beautiful "Annette" size of the German XI Girl. Marked: XI. Closed mouth; glass eyes.

S344 Elita head mold. Wt. 2 lbs.
WSGD5 Worksheet

Body and Patterns for Annettes:

Three bodies available:

GB650S German composition body (preferred)
TB6.5S Toddler composition body
ALB9606 Optional Body mold.

Patterns for GB650S:

CP9003 Original dress with fitted waist, underwear
CP9004 Boy's authentic colonial costume (shown on **S330 Stephen**)
CP9005 Double-breasted coat, cap, knitted mittens, purse (shown on **S328 Meg**)
CP9006 Two Kate Greenaway-style yoked dress, underwear (shown on **S329 Amanda and S327 Joe**)

S & H



Little Star

Rare Simon and Halbig, marked 1448 Simon & Halbig S&H. Pierced ears. Article: *Doll Artisan* Vol. 25, No. 3; worksheet: **WSGD6**.

Doll size: 11.5" (29cm), head circ.: 6" (15cm); eyes: 12mm

S178 Little Star head mold. Wt. 8 lbs.

Fits **GB8.75S** German compo. body.

For patterns, see *German composition body section*.

K*R



Mein Liebling

Boy or girl. Marked: K*R, Simon & Halbig 117-70. Articles: *Doll Artisan*, Vol. 17, No. 5.; Vol. 21 No. 2. Worksheet for German Dolls, **WSGD32**.

Doll size: 24" (61cm); head circ.: 11.75" (30cm); eyes: 18mm

S141 Mein Liebling head mold. Wt. 20lbs.

Fits **GB18S** and **GB18.5S** German compo. body.

For patterns, see *German composition body section*.

OED3071 Optional body mold.

Doll size: 20" (51cm); head circ.: 10.25" (26cm); eyes: 16mm

S144 Mein Liebling II head mold. Wt. 14 lbs.

Fits **GB16S** German compo. body.

For patterns, see *German composition body section*.

OED3058R Optional body mold.

Doll size: 17" (43cm), head circ.: 8.75", eyes: 12-14mm

S252 Mein Liebling IV head mold. Wt. 7lbs.

Fits **GB130S** German compo. body.

For patterns, see *German composition body section*.

ALB9313 Optional body mold.

Doll size: 10, 12"; head circ.: 6" (15.25cm); eyes: 10mm

S151 Mein Liebling III head mold. Wt. 3lbs.

Fits **GB7S** and **GB8.75S** German compo. body. For patterns, see *German composition body section*.

ALB9201 Optional body mold.

Hans and Gretchen

Boy or girl from the same mold (girl shown). Painted eyes. Marked: K*R 114.

References: Worksheet for German Dolls, **WSGD12**. Articles: *Doll Artisan* Vol. 23, No. 5

Doll size: 20" (51cm); head circ.: 10.5" (26cm).

S029H K*R 114 Hans/Gretchen head mold. Wt. 18lbs.

Fits **GB16S** German composition body. For patterns, see *German composition body section*.

OED3058R Optional body mold.

Also comes as 17.5" (44.5cm) glass-eyed version (head mold # **OED3025**)



S042

Arthur

Open/closed mouth Heubach with two lower, molded teeth. Molded hair, intaglio eyes. Rare version with glass eyes. Also brown version. Marked: Heubach 7664. Article: *Doll Artisan* Vol. 18 No. 2.

Doll size: 10 (25cm), head circ.: 7 (18 cm), eyes: painted

S042 Arthur head mold. Wt. 3 lbs.

Fits **GB7S** German and **BB7.5S** Baby compo. bodies. For patterns, see *composition body section*.

ALB9201 Optional body mold.

Heubach



Johann

Handsome Heubach child with molded hair, intaglio eyes. Marked: 8 Germany.

Articles: *Doll Artisan* Vol. 22 No. 1.; Vol. 25 No. 5. Worksheet: **WSGD1**

Doll size: 17" (43cm), head circ.: 10" (25cm)

S155 Johann head mold. Wt. 11 lbs.

Fits **GB13S** or **GB130S** German compo. bodies.

For patterns, see *German composition body section*.

OED3091 Optional body mold.



S258

Heubach Charmer

This expressive Heubach from the beginning of the 1900s is quite a find! It's basket weave bonnet, intaglio eyes and gently smiling mouth has a charm all its own. The bonnet is decorated with a molded bow and ribbon. Baby or toddler body. This is a five-piece mold to aid in keeping the intricate detail on the bonnet. Article in *Doll Artisan* Vol. 24 No. 5. Step-by-step instructions: **WSPP3**.

Doll size: 11.75" (30cm) on Baby body and 15" (39.5cm) on German body.

S258 Heubach Charmer head mold. Wt. 9 lbs.

Fits **BB90S** Baby or **GB110S** German Composition Body.

For patterns, see *composition body section*.

Sailor costume pattern (fits **BB90** and **GB110**) is shown on doll (**CP2000**).



CP2000



S341/S361

Die Schwester

Comes in 2 sizes

A sister to Bruder Argerlich, originally made by Gebr. Heubach, Germany. Not marked. Painted intaglio eyes and hair. Made circa. 1910. Article: *Doll Artisan* Vol. 22, No. 2; Vol. 24, No. 3.

Doll size: 20.5" (52cm)

S341 Die Schwester head mold. Wt. 15lbs.

Fits **GB15S** Germany compo. body. For patterns, see *composition body section*.

Doll size: 14" (36cm)

S361 Die Schwester II head mold. Wt. 5lbs.

Fits **GB105S** German Compo. Body.

Sailor dress, underwear; hat pattern is shown on doll (**CP1801**).

Comes in 2 sizes - A brother to Die Schwester. Very rare baby or toddler doll, originally made by Gebr. Heubach, Germany circa. 1918. Marked 8548. Painted intaglio eyes and hair. Rare version has glass eyes. Articles: *Doll Artisan* Vol. 22 No. 1; Vol. 24 No. 3.

Doll Size: 19" (48cm)

S340 Bruder Argerlich head mold. Wt. 18lbs.

Fits **TB145S** Toddler and **BB155S** Baby compo. body. For patterns, see *composition body section*.

Traditional German outfit pattern (for **TB145S**) is shown on doll (**CP106**).

Doll size: 11" (28cm)

S360 Bruder Argerlich II head mold. Wt. 4 lbs.

Fits **SFB19S** Composition Body. For patterns, see *composition body section*.

CP322 Boy's sailor suit, underwear; hat pattern

Bruder Argerlich



S340/S360



CP322

Kestner



S001H/S008H

Dear Googly - Little Googly

Our very first doll mold—an all-time favorite. Article: *Doll Artisan* Vol. 22, No. 3; painting worksheet **WSGD15**. Marked: *JDK221*, by JD Kestner.

Dear Googly

Doll size: 12" (30 cm); head circ.: 9" (23 cm); eyes: 16mm

S001H Dear Googly head mold. Wt. 6lbs.

Fits **GB8S** German composition body.

For patterns, see *German composition body section*.

Googly dress pattern is shown on doll (**CP302**).

Little Googly

Same as **S001H**, one size smaller.

Doll size 9" (23cm), head circ.: 8" (20cm), eyes 14mm

S008H Little Googly head mold. Wt. 5lbs.

Fits **GB7S** German composition body.

For patterns, see *German composition body section*.

ALB9100 Optional body mold.



S321/S323

Kestner's Ana - Anita

Ana

Girl or boy. Marked: *Made in Germany, 208*.

Sleeping or painted eyes. Closed mouth. Articles:

Doll Artisan, Vol. 17, No. 4; Vol. 19, No. 5.

Worksheet: **WSGD31**.

Doll size: 15.75" (40 cm); head circ. 8.5" (21 cm);

eyes 12-14mm,

S321 Kestner's Ana head mold. Wt. 7lbs.

Fits **GB12S** German compo. body.

Anita

One size smaller than Ana.

References: *Doll Artisan*, Vol. 17, No. 4.

Doll size: 14.5" (37 cm), head circ.: 7.5" (19 cm),

eyes: 12mm

S323 Kestner's Anita head mold. Wt. 6lbs.

Fits **GB11S** and **GB110S** German compo. body.

Norwegian folk costume pattern is shown on

doll **CP1901**.

For patterns, see *German composition body section*.

ALB9301 Optional body mold.



MP45

AT Nina

Child or lady doll. Marked 9 on head and shoulder plate. Article: *Doll Artisan* Vol. 16, No. 6. Worksheet: **WSGD28**.

Doll size: 12.25" (31cm) as child, 15" (38cm) as lady; head circ.: 7.5" (19cm); eyes: 12mm

S320 Kestner's A.T. Nina head mold. Wt. 4lbs.

Fits **FB10JS** French compo. body.

For patterns, see *French composition body section*.

As lady:

S9320 Shoulder plate mold. Wt. 3lbs.

A9194 Arm mold. Wt. 3lbs.

Pattern for lady:

BP73 Body with feet

MP45 Lady's traveling costume



Marika

New J.D. Kestner marked: 154 11G Germany. Cloth or leather body with feet. Article: *Doll Artisan* Vol. 25, No. 2. Worksheet: **WSGD41**.

Doll size: 19" (48cm); head circ. 10" (25cm); eyes: 16mm

OED3005 Marika shoulder-head mold. Wt. 16lbs.

OED3006 Arms Mold. Wt. 5 lbs.

Dress and suit pattern is shown on dolls (**MP207**).

BP98 Body pattern with feet.



XI Girl

Early German child doll. Girl, young lady, or boy. Attributed to Kestner & Co. Marked: XI. Worksheet: **WSGD5**.

Doll size: 15" (38cm); head circ.: 8" (20cm); eyes: 12mm

S108 XI Girl head mold. Wt. 5lbs.

Fits **FB12S** French compo. body (for child version).

For patterns, see *compo. body section*.

For leather/cloth body:

S9108 Shoulder-plate mold. Wt. 4lbs.

A9194 Arm mold. Wt. 3lbs.

L9107 Leg mold (optional). Wt. 6lbs.

BP42 Body with feet pattern.

She also comes in an Annette size 9" (23cm), see *Elita*.



Daisy Elmira

German Kestner from around 1911, marked: 171. Open mouth with four teeth, round glass sleep eyes (most often blue), mohair upper lashes, lower lashes are painted straight down, no earring holes. Blond hair, usually of mohair. Article: *Doll Artisan* Vol. 25 No. 5. Mohair lashes instructions: **WSFD39**. Worksheet: **WSGD42**.

Doll size: 18" (45.75cm), eyes: 14mm, head circ.: 10" (25.5cm)

OZ007 Daisy Elmira head mold. Wt. 6 lbs.

Fits **GB14SA** German composition body.

SC335 Teeth mold.

Pattern:

CP4010 Party dress and hat pattern

(coming soon)

OTHER GERMAN DOLLS AVAILABLE, BUT NOT PICTURED:

For patterns, see *German composition doll body section*.

NAME	HEAD MOLD #	MARKING	DOLL SIZE	EYES	HEAD CIRC.	BODY INFO	WORKSHEET/REFERENCES
Carla (Kestner)	S167	F10 Mode	17" (43cm)	18mm	9.25" (24cm)	GB13S, GB130S, OED3091	Worksheet: WSGD7 , Article: <i>Doll Artisan</i> Vol. 21 No. 4
Inge (Kestner)	S338	152	17" (43cm)	16mm	9.25" (24cm)	GB130S	Worksheet: WSGD36 , Article: <i>Doll Artisan</i> Vol. 19 No. 4
Lorie (K & H)	S011H	K&H, 526	14.5" (37cm)	Painted	8.5" (22cm)	GB11S, GB110S, ALB9301	Worksheet: WSGD24
Rosalind (K*R)	S195	Simon & Halbig, K*R 117n Germany 20	28" (71cm)	22mm	14.5" (37cm)	GB21S, OED3035	Worksheet: WSGD23 , Article: <i>Doll Artisan</i> Vol. 17, No. 5; Vol. 20 No. 4.
Mein Neuer Liebling Rose (K*R)	S199	Simon & Halbig, K*R 117n Germany 20	24" (61cm)	18mm	12.5" (31cm)	GB18.5S	Worksheet: WSGD23 , Article: <i>Doll Artisan</i> Vol. 17, No. 5; Vol. 20 No. 4.
Hans Gretchen (glass eyed) (K*R)	OED3025	K*R 114	17.5" (44cm)	14mm	9" (23cm)	GB130S, GB13S, OED3091	Worksheet: WSGD12 , Article: <i>Doll Artisan</i> Vol. 13, No. 5.
Max (K*R)	S168R	K*R 123	8" (20cm)	8mm	5.75" (15cm)	GB650S, OED3090	Article: <i>Doll Artisan</i> Vol. 21 No. 3
Moritz (K*R)	OED3033	K*R 124	8" (20cm)	8mm	5.75" (15cm)	GB650S, OED3090	Article: <i>Doll Artisan</i> Vol. 21 No. 3
Peter & Marie (K*R)	S056	K*R 101	10" (25cm)	Painted or glass	6.5" (16.5cm)	GB7S, ALB9201, ALB9412	Worksheet: WSGD13
Faye (S & H)	S027H	150 S & H	13" (33cm)	Painted	7.5" (19cm)	GB10S, SFB10S, ALB9301	Worksheet: WSGD11 , Articles: <i>Doll Artisan</i> Vol. 17, No. 6; Vol. 19 No. 3
Gisela (S & H)	S197	S&H 1279 DEF Germany 14 112	24" (61cm)	20mm	12.75" (33cm)	GB18.5S, OED3071	Worksheet: WSGD29 , Article: <i>Doll Artisan</i> Vol. 17, No. 1; Vol. 25 No. 4
Ingrid (S & H)	S158	151 S&H 7 112	14, 15" (36, 38cm)	Painted	8.75" (22cm)	GB11S, GB12S, GB110S, ALB9302	Worksheet: WSGD33 , Article: <i>Doll Artisan</i> Vol. 17, No. 6
Kathryn (S & H)	OED3013	1248 Simon & Halbig 13	23" (58cm)	18mm	12" (30cm)	GB18S, LB195S, OED3012, OED3075	Worksheet: WSGD6 , Article: <i>Doll Artisan</i> Vol. 17 No. 2
Shannon (S & H)	S196	Germany, Heinrich Handwerck, Simon & Halbig 6112	25" (64cm)	22mm	12.25" (31cm)	GB18.5S, OED3071	Worksheet: WSGD26 , Article: <i>Doll Artisan</i> Vol. 16, No. 2
Shannon II (S & H)	S254	Germany, Heinrich Handwerck, Simon & Halbig 6112	17.5" (44cm)	12-14mm	9.5" (24cm)	GB130S, ALB9313	Worksheet: WSGD26 , Articles: <i>Doll Artisan</i> Vol. 16, No. 2; Vol. 20, No. 4
Susan (Large) (S & H)	S331	1078 Germany 18 Simon & Halbig	36" (91cm)	28-30mm	17" (43cm)	GB280S	Worksheet: WSGD34 , Article: <i>Doll Artisan</i> Vol. 18, No. 4; Vol. 19, No. 4
Susan (S & H)	S332	1078 Germany 18 Simon & Halbig	30.5" (78cm)	26mm	14.5" (36cm)	GB23.5S, OED3077	Worksheet: WSGD34 , Article: <i>Doll Artisan</i> Vol. 18, No. 4; Vol. 19, No. 4
Bettina (Schmidt)	S336	BSW 2072-7	26" (66cm)	22mm	14.5" (37cm)	GB21S, OED3035	Worksheet: WSGD37 , Article: <i>Doll Artisan</i> Vol. 19 No. 3
Billie (Heubach)	S028H	7246	20, 23" (51, 58cm)	18mm	13" (33cm)	GB18.5S, TB145S, BB155S, OED3071	Worksheet: WSGD27 , Article: <i>Doll Artisan</i> Vol. 22 No. 4
Singing Susanna (Heubach)	S124 (shoulder head)	Heubach 7851 Germany	12.5" (32cm)	Intaglio	Molded hair	A930S, L960S, BP34, BCP11	Worksheet: WSGD22
June Coquette (Heubach)	S408 (shoulder head)	78 Heubach 50	10.5" (27cm)	Intaglio	Molded hair	AL9408, BP14, BCP10	Worksheet: WSGD40 , Article: <i>Doll Artisan</i> Vol. 24, No. 6
Liselotte (Heubach)	S074 (flange neck)	7 Germany 9355, Heubach	16" (40.5cm)	14mm	9" (22.8cm)	A9072, BP31, MP206	Worksheet: WSGD25 , Article: <i>Doll Artisan</i> Vol. 22 No. 4
Robert (Heubach)	S194	7620 Germany 5 (w/sunburst)	13.5" (34cm)	Intaglio	7.75" (19cm)	GB11S or ALB9301	Worksheet: WSGD19 , Article: <i>Doll Artisan</i> Vol. 13, No. 5
Whistler (Heubach)	S010H	Heubach	11, 13" (28, 33cm)	Intaglio	8.5" (22cm)	GB10S, GB8S, SFB10S, ALB9301, ALB9302	Worksheet: WSGD19 , Article: <i>Doll Artisan</i> Vol. 13, No. 5
Henri (Heubach)	S049	Sunburst symbol	11, 13" (28, 33cm)	Intaglio	9" (23cm)	GB10S, GB8S	Article: <i>Doll Artisan</i> Vol. 15, No. 2

FASHION AND LADY DOLLS

Slim-waisted lady dolls preceded the so-called children dolls. As children dolls became more popular, beginning in the 1880s, new and more child-like heads were developed. Some lady dolls' heads were also used for children dolls. Examples are: Stobé, Lady Margaret, A.T. Nina and Mlle. Lilianne.



Lady Stanhope

Beautiful French fashion doll, perfect for the Rochard Technique. Adorn her shoulderplate with Stanhopes (glass jewel magnifiers) set in a necklace pattern and decorated with Rochard Paste china paint and fired gold paint (GOLD). A shoulder-head doll with porcelain lower arms and legs with molded boots. Reference: *Doll Artisan* Vol. 20, No. 1.

Doll size: 28" (71cm), head circ.: 12.25" (31cm), eyes: 18mm,

S629 Lady Stanhope shoulder-head mold. Wt. 26lbs.

A9629 Arms mold. Wt. 16lbs.

L9629 Legs mold. Wt. 20lbs.

Patterns:

BP90 Body.

MP63 Dress. (shown)



Stobé

Beloved French lady or child, unmarked but attributed to Jumeau. Pierced ears. Worksheet for Lady Dolls, **WSLD6**. Article: *Doll Artisan*, Vol. 15, No. 4. Fits compo. bodies **LB15S**, **FLB16S**.

Doll size: 19" (48cm) lady, 16" (41 cm) child, head circ.: 9" (23cm), eyes: 12-14mm

S026H Stobé head mold. Wt. 7lbs.

For patterns, see compo. body section.

For 16" (41 cm) child, use compo. body FB12JS.

Portrait of Jeanne

Beloved lady doll, one size smaller than Stobé.

Fits **LB13S**, **LSB13S** (Surprise Body).

Doll size: 16" (41cm), head circ.: 8" (20cm), eyes: 12mm

S139 Portrait of Jeanne head mold. Wt. 5 lbs.

For **LB13S** pattern, see Lady Pamela (**S016H**)

See pg. 15

Smiling Bru Leone

Very rare lady from the 1870's by Leon Casimir Bru. Marked: Depose K. Pierced ears. Worksheet for Lady Dolls, **WSLD5**. Articles: *Doll Artisan*, Vol. 15, No. 1; Vol. 17, No. 4; Vol. 18, No. 6; Vol. 19, No. 2; Vol. 21, No. 3

Doll size: 20.25" (52cm), head circ.: 8.75" (22cm), eyes: 14mm,

S190 Leone Smiling Bru head mold. Wt. 9lbs.

S9190 Shoulder-plate mold. Wt. 3lbs.

A9107 Arm mold. Wt. 3lbs.

Patterns:

LB219 Bru body

MP33 Lady Bru gown, underwear (incl. instructions to modify LB219) (shown on doll)



Leone II

Smaller version of S190.

Doll size: 17", head circ.: 7 1/2", eyes: 12mm

S191 Leone Smiling Bru II head mold. Wt. 5lbs.

S9191 Shoulderplate mold.

A9175 Arm mold.

Patterns for cloth body:

BP50 Body

MP26 Fashion Dress, **MP25** Underwear

Optional: fits compo. body **LB15S**. For patterns, see compo. body section.



AT Nina

See German, Kestner section for details.



BCP12

Lady Marta

Early German Kestner lady doll with plump cheeks and pleasant expression. Incised: 9. Worksheet: **WSLD7**.

Article: *Doll Artisan*, Vol. 16, No. 1.

Doll size: 19" (48cm); head circ.: 8.25" (21cm); eyes: 14mm

S072 Lady Marta shoulder-head mold. Wt. 8lbs.

A9072 Arm mold. Wt. 3lbs.

Patterns:

BP30 Body with feet

BCP12 Body, jacket, skirt, blouse, hat, slip, underwear

E.J. Fashion

Fabulous French lady from the last century. Smaller version of the beloved Larkin. Marked: EBJ and made by Emile Jumeau around 1880. Pierced ears. Optional: fits compo. bodies **LB13S**, **LSB13** (Surprise Body). Reference: *Lady Dolls*, paint after Larkin, p. 39. Articles: *Doll Artisan* Vol. 23, No. 5; Vol. 25, No. 1 (as Surprise doll).

Doll size: 16" (41cm), head circ.: 8" (20cm), eyes: 12mm

S175 E.J. Fashion head mold. Wt. 7lbs.

S9175 Shoulderplate mold. Wt. 5lbs.

A9175 Arm mold (long). Wt. 9lbs.

Patterns:

BP50 Body

MP26 Fashion Gown (see photo, above)

MP25 Underwear (see photo, right)



Lady Jumeau

Very similar, smaller version of E.J. Fashion. Marked: 3.

Doll size: 10.5" (26cm), head circ.: 5.25" (13.3cm), eyes: 8mm

S110 Lady Jumeau head mold.

S9110 Shoulderplate mold.

LAL9200 Arm and leg mold.

BP57 Body pattern.





Antique

S137

Lady Margaret

Our prettiest German lady or child doll. Incised: 136. Pierced ears. Reference: Lady Dolls.

Doll size: 16" (41 cm) lady, 14" (36 cm) child; head circ.: 7" (18cm); eyes: 12mm

S137 Lady Margaret head mold. Wt. 7lbs.
S9109 Shoulderplate mold. Wt. 2lbs.
A9199 Arm mold. Wt. 3lbs.
L9102 Leg mold. Wt. 3lbs.

Patterns:

LB1 Cloth body
LB1116 Bridal outfit
LU190116 Lingerie

For 14" (36cm) child doll, use compo. body **FB10S**.

See compo. body section for pattern photos.



LI3116



LU190116

NEW!



SWEETHEART

Sweetheart - (DAG mold)

Sweetheart is a portrait doll, in the likeness of silent screen star Mary Pickford, by the German firm, Simon & Halbig, circa. 1920. D.A.G. 1998 Convention mold. Instructional book (**SWEETHEARTBK**). Articles: *Doll Artisan* Vol. 21, No. 5; Vol. 24 No. 6.

Doll size: 20" (51cm), eyes: 14-16mm, head circ.: 10" (25.5cm)

SWEETHEART head mold. Wt. 8lbs.

Fits **LB190S** Lady compo. body.

Pattern: Sweetheart jacket, skirt, blouse and underwear pattern (**CP1009**). (shown on doll)

Doll by Kristin Thor

NEW!



S357

Fashion Jumeau

Tete Jumeau with a lady style neck. Pierced ears. Fits **LB205S** compo. body. Article: *DOLLS Beautiful* 2003-1. Worksheet: **WSLD9**.

Doll size: 25" (63.5cm); eyes: 20mm; head circ.: 11.75" (30cm)

S357 Fashion Jumeau head mold.

CP1007 Dress and underwear pattern.



CP1007



Doll by Sheryl Williams



CP6500

Mlle. Lilianne

French portrait Jumeau as lady. White or brown version. Marked: 12 on head and shoulder plate. Has applied ears, pierced through the lobe. Worksheet: **WSFD30**. Articles: *Doll Artisan* Vol. 18, No. 2; Vol. 19 No. 4; Vol. 22, No. 1.

Doll size: 24" (61cm) on leather body, 22.5" on FB17S; head circ.: 11.25" (28cm); eyes: 20mm

S325ST Mlle. Lilianne head and ear molds. Wt. 9lbs.

For leather body:

S9325 Shoulderplate mold. Wt. 9lbs.

A9325 Arm mold. Wt. 6lbs.

Pattern: **BP86** Body with feet.

For composition body:

For lady doll use: **LB205S** Lady compo. body.

See *Fashion Jumeau* (S157) for pattern

For child doll use: **FB17S** French compo. body.

For patterns, see compo. body section.

Drop-waist dress (**CP6500**) is shown in thumbnail.



Doll by Sheryl Williams

OED3074

Lady Olevia

A rare lady doll by Simon & Halbig. Marked: Simon & Halbig 12 Mold #1159. Germany. Pierced ears, glass eyes. Fits **LB205S** compo. body. Article: *Doll Artisan* Vol. 23 No. 6. Worksheet: **WSLD4**.

Doll size: 25" (63.5cm); head circ.: 13" (33cm); eyes: 16mm

OED3074 Lady Olevia head mold. Wt. 12lbs.

For pattern, see *Fashion Jumeau* (S157).

Lady Pamela

Kestner lady doll, marked: D Made in Germany 8, 162. Open mouth, set-in teeth. Slanted upper and lower lashes or straight lower lashes and upper hair lashes only. Fits **LB13S**, **LSB13S** (Surprise Body) compo. bodies. Worksheet: **WSLD10**. Articles: *DOLLS Beautiful* 2003-2; *Doll Artisan* Vol. 22, No. 5.

Doll size: 16" (40.5cm), head circ.: 7.5" (19cm), eyes: 12mm

S016H Lady Pamela head mold. Wt. 5lbs.

Skirt, jacket, petticoat, chemise, drawers and hat pattern (**CP1004**) is shown on doll.



S016H

Doll by Helen Schaeffer

Mlle Dee

Rare, pale lady doll by Mme. Rohmer, Paris, France. Pierced ears. References: *Doll Artisan* Vol. 25, Nos. 1 and 2; *Lady Dolls* by M. Seeley.

Doll size: 9.25" (23.5cm), head circ.: 5" (12.5cm), eyes: 8mm

S135 Mlle Dee head mold. Wt. 3lbs.

S9110 Shoulder plate mold.

AL9408 Arm and leg mold.

BP14 Body pattern.



S016H

OTHER LADY DOLLS AVAILABLE, BUT NOT PICTURED:

NAME	HEAD MOLD #	MARKING	DOLL SIZE	EYES	HEAD CIRC.	BODY INFO	PATTERNS	WORKSHEET/REFERENCES
Paris Lady	S102	none	15.25" (38cm)	12mm	7" (18cm)	S9109, A9159, L9102	BP16, MP12	Lady Dolls book.
Mlle. Florence (rG)	S134	8	20" (51cm)	16mm	9.25" (24cm)	FLB16S	L13720, CP1003	Worksheet: WSLD3 , Article: <i>Doll Artisan</i> Vol. 14, No. 3
Gibson Girl II (Kestner)	S186	172	16" (41cm)	8mm	5" (13cm)	A9605, L9605,	LB1, LBPI6LB1	Worksheet: WSLD1
Eliza	S188	None	19" (48cm)	12mm	8" (20cm)	Arms: A9072 or A9610 Legs: L9621	L13116 LU190116 BP30, BCP12	Worksheet: WSLD2
Miss Chi	S136	BSW 4	16" (41cm)	12mm	7.5" (19cm)	LB13S, ALB9302	CP1005	Worksheet: WSLD8 , Article: <i>Doll Artisan</i> Vol. 18, No. 4

CHINA AND PARIAN DOLLS

Shoulder-head dolls with molded hair and sometimes molded decorations such as collars, jewels, combs and ribbons. China dolls are glazed, parian dolls are unglazed. Made in Germany during the second half of the 1800s.



Doll by Virginia Gale

S633



MP204

Alice

Parian with molded hair with ribbon and painted eyes. Delicate porcelain hand mold. Worksheet: **WSCPD9**. Article: *Doll Artisan* Vol. 23, No. 1.

Doll size: 21" (53cm), head circ.: 10" (25.5cm)

S633 Alice shoulder-head mold.

A9633 Arm mold.

L9621 Leg mold.

Patterns:

BP94 Body pattern.

MP204 Costume pattern.



Doll by Bob Severns

S631



MP205

Emma's Hat Gibson

Parian doll originally from Emma Clear's collection. Beautifully detailed molded sun hat and hair, intaglio eyes and sweeping neck line. Reference: *Doll Artisan* Vol. 24, No. 3.

Doll size: Approx. 17" (43cm)

S631 Emma's Hat Gibson shoulder/head mold.

A9610 Arm mold.

L9609 Leg mold.

Patterns:

BP96 Body pattern.

MP205 Gibson Girl dress, underwear pattern.



S636/S637/S638

Dolls by Virginia Freedman

Fancy Family Bonnet Head Dolls

Annabell, Lady Lavender and Sweet Clover Parian dolls originally from the Emma Clear collection. Articles: *Doll Artisan* Vol. 24, No. 4, Vol. 25, No. 6

All three dolls fit on the same body parts:

A9605 Arm mold.

L9636 Side buttoned boot mold.

Patterns:

BP85 Body pattern.

MP58 Gown with cape pattern. (shown on Lady Lavender)

Annabell

Approximate doll size: 14" (35.5cm).

S636 Annabell shoulder-head mold.

Lady Lavender

Reference: *Beautiful Dolls*, page 98 (similar)

Approximate doll size: 14.5" (37cm).

S637 Lady Lavender shoulder-head mold.

Sweet Clover

She can be done as china or parian. Glass or painted eyes. Approximate doll size: 14" (35.5cm).

S638 Sweet Clover shoulder-head mold.



Dolls by Sheryl Williams

S639

Nymphenburg Lady

German china doll from the Emma Clear collection. Originally from the mid 1800s and produced at KPM's manufacturing facility in Meissen. Painted eyes and medium brown painted hair. Article: *Doll Artisan* Vol. 25 No. 1. Worksheet: **WSCPD8**.

Doll size: 12" (30.5cm)

S639 Nymphenburg Lady shoulder-head mold. Wt. 6 lbs.

L9639 Leg mold. Wt. 3 lbs.

A9639 Arm mold. Wt. 4 lbs.

Patterns:

BP99 Body pattern.

MP67 18th Century costume and underwear pattern. (shown on doll)



S615

Augusta Victoria

Parian. Molded beads in hair. Molded blouse. Iron cross. Painted or glass eyes. Pierced ears. Reference: Theriault, *More Dolls*, p. 75.

Doll size 17" (43cm)

S615 Augusta Victoria shoulder-head mold. Wt. 10lbs.

A9610 Arm mold. Wt. 6lbs.

L9609 Leg mold with molded high-heel boots. Wt. 6lbs.

Patterns:

BP40 Cloth body with corset.

MP15 Gown, chemise, pantalets, petticoat, and crinoline. (shown in this section, page 17)

MP17 Gown, underwear. (shown on doll)

Elizabeth

Elaborate parian lady with molded V-shaped collar and comb in hair. Hand sculpted rose at collar and feathers in hair are optional authentic decorations. Glass or painted eyes. Pierced ears. Made by C.F. Kling & Co., Germany. Reference: P. Smith, *Antique Collector's Dolls, Second Series*, p. 204.

Doll size 21" (53cm)

S622 Elizabeth shoulder-head mold. Wt. 15lbs.

A9621 Arm mold. Wt. 5lbs.

L9621 Leg mold. Wt. 1 lbs.

BP48 Cloth body with corset pattern.

MP57 Gown pattern. (shown in this section, page 17)





Diedra

Splendid Parian with molded gold beads weaving in and out of hair; the back parted in middle. Painted eyes. Pierced ears. Wide shoulder plate for low-cut bodice. Reference: *Doll Artisan* Vol. 17, No. 6.

Doll size 18" (46cm)

S620 Diedra shoulder-head mold. Wt. 11 lbs.

A9610 Arm mold.

L9609 Leg mold high-heeled boot or

L9610 Leg mold flat shoe

Patterns:

BP41 Cloth body with corset or

LB1 Cloth body with seat

MP16 Gown, chemise, petticoat, pantalets (for **BP41**)

(shown on *Jenny Lind*)

L13118 Bridal outfit (for **LB1**) (see *Lady Margaret* (**S137**)

for photo of **L13116**)



Jenny Lind

China or parian with hair parted in middle and drawn into a chignon in the back. Painted eyes. Made by Alt, Beck & Gottschalck, Germany. Reference: F. Theriault, *More Dolls*, pg. 42. Worksheet: **WSCPD7**.

Doll size 18" (46cm).

S610 Jenny Lind shoulder-head mold. Wt. 14 lbs.

A9610 Arm mold.

L9610 Leg mold.

Optional: **L9609** Leg mold with high-heeled boots

Patterns:

BP41 Cloth body with corset pattern.

MP16 Gown, chemise, petticoat, pantalets pattern

(shown on doll)



Ann Rost

Very rare china or parian. Molded head-comb holds hair net in back. Molded tassels also in back. Painted eyes. Reference: F. Smith, *Antique Collector's Dolls*, p. 66 (B/VV).

Doll size 18" (46cm)

S611 Ann Rost 3-piece shoulder-head mold. Wt.

11 lbs.

A9610 Arm mold.

L9610 Leg mold.

Optional: **L9609** Leg mold with high-heeled boots

Patterns:

BP41 Cloth body with corset or **LB1** Cloth body

with seat

MP16 Gown, chemise, petticoat, pantalets (for

BP41) (shown on *Jenny Lind* **S610**)

L13118 Bridal outfit (for **LB1**) (see *Lady Margaret* (**S137**) for photo of **L13116**)



Deborah

Parian. Braids and molded bow in back of blond hair. Molded blouse with scalloped collar, buttons and vertical tucks. Pierced ears. Painted eyes. Reference: Merrill, *Art of Dolls*, p. 166.

Doll size 17" (43cm)

S612 Deborah shoulder-head mold. Wt. 11 lbs.

A9610 Arm mold. Wt. 6 lbs.

L9609 Leg mold high-heel boot (wt. 6 lbs.) or

L9610 Leg mold flat shoe (wt. 6 lbs.)

Patterns:

BP40 Body, corset.

MP15 Gown, chemise, pantalets, petticoat, crinoline. (shown in this section)

MP17 Ball gown (shown on *Augusta Victoria*, **S615**, page 16)



MP15 Gown, chemise, pantalets, petticoat, and crinoline pattern for Augusta Victoria and Deborah.



MP57 Gown pattern for Marie Louise, Queen Louise of Prussia and Elizabeth

OTHER PARIAN DOLLS AVAILABLE, BUT NOT PICTURED:

NAME	HEAD MOLD #	MARKING	DOLL SIZE	EYES	HEAD CIRC.	BODY INFO	PATTERNS	WORKSHEET/REFERENCES
Sisi	S627	None	14.5" (37cm)	Painted	Painted	A9627, L9627	BP85, MP58	Article: <i>Doll Artisan</i> Vol. 18, No. 1
Marie Louise	S628	None	19.5" (49cm)	Painted	Painted	A9610, L9609	BP84, MP57	Worksheet: WSCPD6 Article: <i>Doll Artisan</i> Vol. 18, No. 1
Alexandra	S626	None	19-20" (49-51cm)	12mm	Painted or 8" (20cm)	Arms: A9072 or A9610 Legs: L9621	BP30, BCP12	Worksheet: WSLD2 Article: <i>Doll Artisan</i> Vol. 18, No. 4
Queen Louise of Prussia	S630	None	21" (53cm)	Painted or 12mm	Painted or 8" (20cm)	A9621, L9621	BP48, MP57	Article: <i>Doll Artisan</i> Vol. 20, No. 6
Antonia	S632	None	15-16" (38-40cm)	Painted or glass	Painted	A9610, L9609, S9632	BP41, MP16	Article: <i>Doll Artisan</i> Vol. 21, No. 2

BABY DOLLS

Cute and cuddly, Baby dolls can be made with composition bodies (baby or toddler) or cloth bodies. Many can be dressed in special Christening gowns.



Baby Gloria

Beloved German baby doll. Open mouth with teeth. Incised: *Baby Gloria, Germany*. Flange neck.

Doll size: 15" (38cm), head circ.: 11" (28cm), eyes: 14mm

S209 Baby Gloria head mold. Wt. 13lbs.

WSBD22 Baby Gloria Worksheet.

WSBDA Teeth and Tongue worksheet.

AL9209 Arm/leg mold. Wt. 11lbs.

Patterns:

BP58 Body.

MP18 Dress and bonnet. (shown on doll)



Ruby and Jade

Beautiful Hertel & Schwab twins made circa 1930. Two heads in one mold. Marking for Ruby: *Made in Germany 152 7*; marking for Jade: *152 8 1/2*. Article in *Doll Artisan* Vol. 22 No. 3.

Doll size: 12" (30.5cm), head circ.: 9-9.25" (23cm), eye size: 12-13mm

S257 Ruby and Jade head mold. Wt. 12 lbs.

BB905 Compo. Body.

ALB9960 Optional Body mold.

WSBD19 Worksheet.

Patterns:

L15212 Christening gown.

L14912 Baby dress, petticoat, shirt. (**BB905**)

For patterns, see *compo. body section*.



Bonnet Baby

Beautiful baby with sculpted bonnet. Originally by Theodor Recknagel. Intaglio eyes and painted hair. Article: *Doll Artisan* Vol. 23, No. 2; Vol. 25, No. 3.

Doll size: 7.75" (19.5cm)

S256 Bonnet Baby head mold. Wt. 3lbs.

BB6.5S Composition Baby Body.

ALB9433 All-bisque body mold. Wt. 5lbs.

WSBD18 Worksheet for Baby Dolls.

Pattern:

L13408 Layette (for **BB6.5S**)

For patterns, see *compo. body section*.



Hilda COMES IN 4 SIZES

All-time favorite baby doll. Marked: *Hilda JDK 1914*; by J.D. Kestner. Open mouth, molded hair. Articles: *Doll Artisan*, Vol. 19, No. 3 and Vol. 20, No. 1; worksheets for Baby Dolls **WSBD13**, **WSBDA**. Brown version. Holbrook, *The Doll As Art*.

Hilda I

Fits compo. bodies **BB14S**, **TB14S**. Optional body mold **OED3036**.

Head circ.: 12.5" (32cm), doll size: 18" (46cm), eyes: 16mm

S020H Hilda head mold. Wt. 14lbs.

Patterns:

CP104 Dress, bonnet (fits **BB14S**)

L15216 Christening gown (fits **BB14S**)

Hilda II

Same as *Hilda* (**S020H**), but smaller.

Fits compo. body **BB11.5S**. Optional body mold

OED3043.

Doll size: 14" (36cm), head circ.: 10.75" (27cm), eyes: 12mm

S234 Hilda II head mold. Wt. 12lbs.

Patterns:

L15212 Christening gown with variations (fits **BB11.5S**)

CP6002 Romper suit, underwear, jacket, bonnet (fits **BB11.5S**)

Hilda III

One size smaller than *Hilda II* (**S234**).

Fits compo. body **BB7.5S**. Optional body mold **ALB9412**.

Doll size: 9.5" (24cm), head circ.: 7" (18cm), eyes 10mm

S237 Hilda III head mold. Wt. 4lbs.

Pattern:

DPI011 Dress, slip, bonnet, diaper (fits **BB7.5S**)

Hilda IV

Same as *Hilda III* (**S237**), but smaller.

Fits compo. bodies **BB6.5S**, **TB6.5S**. Optional body mold

ALB9433.

Doll size: 8.5" (21cm), head circ.: 6" (15cm), eyes: 8mm

S238 Hilda IV head mold. Wt. 2lbs.

Patterns:

L13408 Baby layette (for **BB6.5S**)

L13909 Romper suit with variations (for **TB6.5S**)

For patterns, see *compo. body section*.



Tynie Baby

Sweet baby doll by B. Lipfert. Incised: 1924 E I Horsman, Made in Germany. BCP02

Flange neck. References: *Baby Dolls*, Vol. I; Worksheet for Baby Dolls **WSBD9**; *Doll Artisan*, Vol. 14, No. 4.

Doll size: 13" (33cm), head circ.: 10.5" (27cm), eyes: 12mm

S214 Tynie Babe© head mold. Wt. 6lbs.

A9214 Hand mold. Wt. 4lbs.

Patterns:

BP04 Cloth body with feet

BCP02 Body, dress, cap, bonnet



Doll by Heather Levy

Oriental Baby

Beautiful features. Incised: AM Germany, 353/4K. By Armand Marseille. Reference: *Making Porcelain Dolls*. Fits compo. body **BB11.5S** (optional body mold **OED3043**).

Doll size: 14" (36cm), head circ.: 10.25" (26cm), eyes: 12mm
S079 AM Oriental Baby head mold. Wt. 12lbs.

Pattern:

CP6003 3-piece pajamas, slippers (for **BB11.5S**)



Doll by Julie Riehle

Dream Baby

Collector's favorite. Incised: A M 341. Flange neck. Also brown version.

References: Worksheet for Baby Dolls **WSBD17**; *Doll Artisan*, Vol. 21, No. 5.

Doll size: 10" (25cm), head circ.: 8" (20cm), eyes: 8mm

OED3046 Dream Baby© head mold. Wt. 6lbs.

OED3000A Hand mold. Wt. 2lbs.

Patterns:

BP06 Cloth body with feet

DP1011 Long dress, bonnet

(see baby compo body: **BB7.5S** for photo)

Marilyn

Magnificent large baby doll with flirty eyes by Kestner. Marked: *Made in Germany*, JKD, 257,64. Open mouth with teeth and tongue. Reference: Worksheets for teeth and tongue **WSBDA**; *Doll Artisan* Vol. 18, No. 2.

Marilyn I

Fits compo. bodies **BB17S**, **GB21S**. Optional body mold: **OED3035**.

Doll size: 22" (on **BB17S**), 26" (on **GB21S**) (56, 66cm), head circ.: 14.75" (38cm), eyes: 20mm
S241 Marilyn head mold. Wt. 23lbs.

Patterns:

CP5001 Short baby dress, underwear, bonnet (for **BB17S**)

CP5002 Christening gown, underwear, bonnet (for **BB17S**)

CP2004 Dress, slip, drawers from 1890's (for **GB21S**)

L12827 Double cape coat (for **GB21S**)

LH15 1908 hat (for **GB21S**)

TONG5 Optional tongue mold. Wt. 2lbs.

Marilyn II

Same as Marilyn, but one size smaller. Fits compo. body **BB155S**.

Doll size: 19" (48cm), head circ.: 12.5" (32cm), eyes: 16-18mm

S326 JKD Marilyn II head mold. Wt. 14lbs.

TONG5 Optional tongue mold. Wt. 2lbs

Pattern:

CP3001 Christening gown. (for **BB155S**)

For patterns, see compo. body section.



Doll by Sheryl Williams



MP29

Baby Stuart

Molded bonnet with painted roses. By Gebr. Heubach. Boy or girl. Painted, intaglio eyes. Reference: Worksheet for Baby Dolls **WSBD11**.

Doll size: 13" (33cm), head circ.: 8" (20cm)

S217 Baby Stuart shoulder-head mold. Wt. 5lbs.

A9305 Arm mold. Wt. 3lbs.

L9305 Leg mold. Wt. 3lbs.

Patterns:

BP19 Leather body

L15212 Christening gown (see baby compo. body: **BB11.5S** for photo)

MP29 Dress, underwear

OTHER BABY DOLLS AVAILABLE, BUT NOT PICTURED:

NAME	HEAD MOLD #	MARKING	DOLL SIZE	EYES	HEAD CIRC.	BODY INFO	PATTERNS	WORKSHEET REFERENCES
Lotti (Hertel & Schwab)	S246	Happy side: 12 Sad side: 159	16" (41cm)	16mm	12" (30.5cm)	BB12.5S	L15213 CP6051	Worksheet: WSBD20 Article: <i>Doll Artisan</i> Vol. 23, No. 6
Bye-Lo	S259	None	18" (45.75cm)	18mm	15" (36cm)	A9259	BP97 , MP66	Worksheet: WSBD21 Article: <i>Doll Artisan</i> Vol. 24, No. 4
Happy	S022H	K*R, S&H,	18" (36cm) 116/A, 50	16mm	12" (30cm)	BB14S , TB14S , GB16S , OED3069	L15216 , CP105 , L14119 , LH20	Worksheet: WSBD21 Article: <i>Doll Artisan</i> Vol. 10, No. 5
Emerald	S247	K*R Simon & Halbig 122 18, No. 4	11.5" (29cm)	12mm	8.25" (21cm)	BB90S , GB8S , ALB9960	L13912 , L15212 , L14912	Worksheet: WSBD6 Article: <i>Doll Artisan</i> Vol.
JDK Oriental	OED3023	JDK243	11.5" (29cm)	12-14mm	9" (23cm)	BB90S , ALB9960	DP1009 , L14912	Worksheet: WSBD9
Garnet	S251	Germany, Arranbee	12" (30cm)	10mm	9" (23cm)	OED3000A	BP91 , MP64	Article: <i>Doll Artisan</i> Vol. 20, No. 1
Opal	S248	Heubach-Köpplesdorf 349-410 Germany	11.5" (29cm)	10mm	8.5" (22cm)	A9249	BP05 , BCP03	Worksheet: WSBD14 Article: <i>Doll Artisan</i> Vol. 17, No. 2
Century Baby	S246	Century Doll Co. 15.5" (39cm) Kestner, Germany	16mm	11" (28cm)		A9246 OR BCA6S	BP54 , MP18	Worksheet: WSBD4

ALL-BISQUE DOLLS

These small dolls have one thing in common: the entire doll is porcelain. Most are German and from the beginning of the 20th century. Some are head-torso dolls, others one-piece dolls, dolls with molded shoes and socks, dolls with molded clothes. Some have painted and others glass eyes. Some have molded hair, others cut-off crown and wig.

KEY: If mold number is for the complete doll, it will have an "ST" added to the number (eg. **S474ST**). Head-torso: head and torso are one piece. Only shoulders and hips are jointed. General instructions for stringing all-bisque dolls can be found in *Doll Artisan* Vol. 17, No. 6.

Mignonnette style all-bisque dolls

S474ST



Antique



Doll by Cindy Guillelte

S475ST



Antique

Faberge

This delicate all-bisque French doll originally came in a fabric-covered egg. This doll has tapered arms and legs, with white socks and pale blue boots. Unmarked. Article: *Doll Artisan*, Vol. 20, No. 5.

Doll size: 5" (13cm), head circ.: 2.5" (6.5cm), eyes: 4mm

S474ST Faberge© mold set (2 molds). Wt. 7lbs.

WSABD15 Painting worksheet.

CP946 Dress pattern (shown on doll)

Periwinkle

French all-bisque doll with a wardrobe and trunk. Head and each limb is incised with a 2. Solid-dome head with painted circle on top. Wardrobe includes 3 dresses, 2 hats, and 5 pieces of underwear. Articles: *Doll Artisan* Vol. 20, No. 6, *DOLLS Beautiful* 2004-1.

Head circ. 2.75" (7cm), Eyes 4mm, Doll Size 5.5" (14cm)

S475ST Periwinkle© mold set (3 molds). Wt. 7lbs

WSABD16 Painting worksheet.

CP947 Wardrobe pattern (shown on doll)



Doll by Cindy Guillelte

S473ST

Belladonna

Extremely rare, beautiful all-bisque French doll. Finely sculpted features, like those of a fashion doll, and unusual detail make her uncommon. Note the cupped hands. Unmarked. Article: *Doll Artisan*, Vol. 20, No. 3.

Doll size: 7" (18cm), head circ.: 4.75" (12cm), eyes: 6mm

S473ST Belladonna mold set (4 molds). Wt. 13lbs.

WSABD17 Painting worksheet.

CP945 Dress, hat, chemise pattern



CP945



S4748T

Doll by Virginia Gale

Bluebell

Jointed all-bisque doll known as Simon & Halbig's Blue-Stocking Girl because of her molded stockings and shoes. Marked: 4, 886. Article: *Doll Artisan* Vol. 23, No. 2.

Doll size: 7" (18cm), head circ.: 4.38" (11cm), eyes: 6mm

S457ST Bluebell complete, 4 molds. Wt. 10lbs.

WSAB2 Worksheet.

Patterns:

CP925 Straight dress, underwear

CP926 Fitted dress with variations

S457ST



Antique



CP925



CP926



S460ST

Doll by Lis Jones

Primrose

Well-sculpted all-bisque doll with bare feet, one open hand and one closed. Attributed to Kestner. Marked III on head and body.

Articles: *Doll Artisan*, Vol. 16, No. 2; Vol. 21, No. 5; Vol. 24, No. 1

Doll size: 7.25" (18cm), head circ.: 4.75" (12cm), eyes: 6mm

S460ST Primrose complete, 4 molds. Wt. 12lbs.

WSABD6 Primrose worksheet.

CP932 Primrose wardrobe, dresses, underwear pattern

Summersweet

Doll originally by JD Kestner. Article: *Doll Artisan* Vol. 24, No. 5.

Doll size: 6.25" (16cm), eyes: 8mm, head circ.: 4.25" (11cm)

S478ST Summersweet mold set.

WSABD20 Worksheet.

CP919 Dress and bloomers pattern. (shown on Nancy)

MOWIGETTE10 Golden Blonde mohair locks.

Other French and German all-bisque Dolls



Little Beth

Lovely jointed all-bisque head-torso French doll attributed to *Bru*. Delicate features, glass eyes, open crown, and well molded bare feet. Article: *Doll Artisan* Vol. 19, No. 4.

Doll size: 5" (13cm), head circ.: 3.5" (9cm), eyes: 4mm

S403ST *Little Beth* mold set. Wt. 6lbs.

CP914 Dress, hat, coat, vest, panties, shoes pattern.



CP914



Gem

Googly-eyed little all-bisque doll originally from Kestner firm in Germany. Marked: *Germany III*. Molded shoes and socks. Head-torso dolls with 8 joints. She can have sleep eyes. Article: *Doll Artisan* Vol. 25, No. 2. (painting, stringing, sleep eyes instruction)

Doll size: 4.13" (10.5cm), head circ.: 3.13" (8cm), eyes: 4-6mm

S416ST *Gem* mold set. Mold wt. 3 lbs. (2 molds)

CP950 Gem boy's suit, girl's dress, underwear pattern.

(shown on doll)

EL17 Elastic.



Robie and Kestner Baby

Chubby baby with molded hair and painted eyes. Head-torso doll. Article: *DOLLS Beautiful* 2003-2.

WSABD23 Robie & Kestner Baby worksheet.

Robie

Doll size: 7" (17.75cm). Marked: 589

S435ST Kestner's Robie mold set.

Pattern:

CP920 Christening outfit, partly knitted, partly crocheted. Includes dress, pants and bonnet. (shown on doll)



Kestner Baby

Smaller version of Robie. Marked: 3.

Doll size 5.25" (13cm)

S404ST Kestner Baby complete, 3 molds. Wt. 6lbs.

Patterns:

CP902 Baby outfit: dress, slip, diaper, bonnet, pillow

L13405 Baby Layette.

(see **BB6.55** compo body section to see same style pattern: **L13408**)



Johnny-Jump-Up

A new little brother to Nancy Girl (S407ST). Innocent looking all-bisque doll; circa 1914.

Possible origin: Hertwig & Co or made by Louis Amberg in Germany. Molded blond hair, jointed arms and legs, wire strung. Dimpled knees. Head and torso in one piece. Article: *DOLLS Beautiful* 2004-1.

Doll size: 5.75" (14.6cm)

S480ST *Johnny-Jump-Up* mold set (2 molds). Mold wt. 8 lbs.

WSABD24 Worksheet.

CP592 Shirt, Knickers and Underwear pattern.

(shown on doll)

Nancy

Content little all-bisque girl. Molded hair decorated with two molded bows. Head-torso doll with molded shoes, painted eyes. Article: *Doll Artisan*, Vol. 25, No. 6.

Doll size: 6" (15cm)

S407ST *Nancy Girl* complete, 3 molds. Wt. 13lbs.

WSABD22 *Nancy* Worksheet.

Patterns:

CP908 Smocked dress, drawers. (see *Forget-Me-Not*)

CP919 Dress and bloomers. (shown on doll)



Iris

Petite head-torso all-bisque doll has molded, unpainted socks, high-button shoes, and glass eyes. Most likely produced in the mid-1880's; attributed to Kestner. Cupped hands and pegged legs. Article: *Doll Artisan* Vol. 19, No. 2.

Doll size: 7" (18cm), head circ.: 4.5" (11.5cm), eyes: 8mm

S465ST *Iris* mold set (3 molds). Wt. 9.5 lbs.

WSABD12 *Iris* worksheet.

CP943 Dress, tulle overdress, chemise and drawers pattern. (shown on doll)





Marnie

Head-torso doll, girl or boy. Open mouth with carved teeth, molded shoes and socks. Marked: 257, 14, SWC. Article and crochet patterns: *Doll Artisan* Vol. 13, No. 6.

Doll size: 4.75" (12cm) eyes: 4mm

S449 Marnie complete mold.

EL17 Elastic.



Little Sunflower

All-bisque Heubach with molded hair, head-torso doll, and painted intaglio eyes. Article: *Doll Artisan* Vol. 24 No. 1.

Doll size: 7" (18cm)

S477ST Little Sunflower mold set (3 molds).

WSABD19 Worksheet.

CP949 Pintucked dress with combination, underwear pattern (shown on doll)



Honeysuckle

All-bisque doll; sister to *Bluebell*, sometimes called Brown-stock girl. Molded above-the-knee stockings and molded shoes with heels and bows. Head-torso doll, painted eyes. Marked 0 on head, arms, and legs. Articles: *Doll Artisan*, Vol. 17, Nos. 4 and 5.

Doll size: 5" (13cm), head circ.: 3" (8cm),

S462ST Honeysuckle complete (3 molds). Wt. 5lbs.

WSABD8 Honeysuckle worksheet.

CP938 Dress with lace overlay and pantaloons pattern. (shown on doll)



Peterkins

All-bisque doll. No movable parts. Molded, painted body suit. Painted eyes. Molded hair. Article: *Doll Artisan* Vol. 25, No. 4.

Doll size: 4.75" (12cm)

S414 Peterkins mold. Wt. 6 lbs.



Ethel Rosebud

A bud of a doll! This tiny all-bisque doll will be the perfect accessory for your large dolls! *Ethel* is a head-torso doll and has molded hair, painted eyes and a closed mouth. Article: *Doll Artisan*, Vol. 23 No. 3.

Doll size: 4.5" (11cm), head circ.: 1.75" (4.5cm)

S476ST Ethel Rosebud complete mold set.

WSABD18 Worksheet.

Forget-Me-Not

All-bisque, head-torso doll, jointed at shoulders and hips. Painted eyes, molded shoes and socks. Her hands and wrists are unique: right is cupped, left is open. Marked: *Made in Germany*. Article and instructions for dress shown in photo: *Doll Artisan* Vol. 18, No. 5.

Doll size: 5.5" (14cm), head circ.: 4.25" (11cm)

S464ST Forget-Me-Not mold set (3 molds).

Wt. 8lbs.

WSABD10 Forget-me-not worksheet.

Patterns:

CP908 Smocked dress, drawers

CP919 Dress, bloomers (shown on Nancy)

CP933 Coat-dress, underwear



CP933



CP908



Edelbud and Edelweiss

Edelweiss and her little sister, Edelbud, are attributed to the Gebrüder Heubach company. Edelweiss has a one-piece head-torso with jointed arms and legs. She has side-glancing intaglio eyes, and a slightly upturned, smiling mouth. Edelbud, the tiny, one-piece all-bisque doll in the photo. Article: *Doll Artisan* Vol. 20, No. 1. **WSABD13** Worksheet for Edelweiss and Edelbud

Edelweiss:

Doll size: 7.25" (18 1/2cm), head circ. 5.75" (14.5cm)

S468ST Edelweiss mold set (3 molds). Wt. 9lbs.

CP944 Edelweiss dress pattern (shown on doll)

CP949 Pintucked dress with combination, underwear pattern (shown on Little Sunflower)

Edelbud:

Doll size: 4" (10cm), head circ.: 3.25" (8.5cm)

S469ST Edelbud mold set (1 mold). Wt. 5lbs.

Crocheted dress pattern not available.



Elsbeth

Smiling all-bisque doll with three molded bows in hair. Tilted head. Made by Gebrüder Heubach. Marked: 10490 3. Head-torso doll. Intaglio eyes. Open-closed mouth. Molded shoes and socks. Article: *Doll Artisan*, Vol. 23, No. 4.

Doll size 7.25" (18cm)

S453ST Elsbeth complete, 3 molds. Wt. 19lbs.

WSABI Elsbeth worksheet.

Patterns:

CP919 Dress and bloomers

(shown on Nancy)

CP949 Pintucked Dress with underwear.

(shown on Little Sunflower)

(Pattern for dress shown in photo not available)



Sarah

German head-torso doll with deeply molded hair, molded shoes and stockings. Painted eyes. Article: *Doll Artisan* Vol. 18, No. 4.

Doll size: 8" (20cm)

S443ST Sarah complete, 3 molds. Wt. 15lbs.

WSABD5 Sarah worksheet.

Patterns:

CP915 Dress, hat, and petticoat, combination

CP942 Crocheted hat, dress, cape (shown on doll)



Snowdrop

All-bisque baby doll originally made by Kammer & Reinhardt. Fully articulated head, arms, legs and torso. Original doll has sleep eyes. Articles: *Doll Artisan* Vol. 25, Nos. 1 and 3 (dress pattern and worksheet).

Doll size: 4.25" (11cm), head circ.: 3.5" (9cm), eyes: 5mm

S479ST Snowdrop mold set (2 molds). Mold wt. 5.5 lbs.

WSABD21 Worksheet.

CP951 Snowdrop christening gown, slip, diaper and bonnet pattern. (shown on doll)

Sweet William

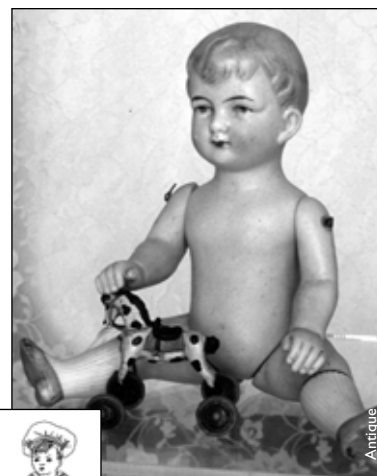
Sweet William will pair up nicely with many of the all-bisque girls, either as a big or little brother. Molded hair, molded socks and shoes, painted eyes. Head-torso doll, marked Germany 31/2 8159. Article: *Doll Artisan*, Vol. 16, No. 5.

Doll size: 6.75" (17cm)

S461ST Sweet William complete, 3 molds. Wt. 10lbs.

WSABD7 Sweet William worksheet.

CP934 Sweet William sailor suit and underwear pattern



CP934

OTHER ALL-BISQUE DOLLS AVAILABLE, BUT NOT PICTURED:

NAME	HEAD MOLD #	MARKING	DOLL SIZE	EYES	HEAD CIRC.	BODY INFO	PATTERNS	WORKSHEET/REFERENCES
Hey, You, Who, Me? (Heubach)	S466ST	9744	3.75" x 4"	Painted	5.5" (13.5cm)	n/a	n/a	Worksheet: WSABD11A . Article: <i>Doll Artisan</i> Vol. 19, No. 1
	S467ST	9743	(9.5 x 10cm)					
Bridget (L. Wolf)	S412	222	9" (23cm)	10mm	7.5" (19cm)	ALB9412, TB6.5S	L13909	n/a
Buttercup (Kestner)	S458ST	n/a	8.25" (21cm)	8mm	5" (13cm)	n/a	CP927	Worksheet: WSABD3 Articles: <i>Doll Artisan</i> Vol. 15 No. 4; Vol. 23 No. 2; Vol. 24 No. 1
Cupid	S447	949	4.75" (12cm)	Painted	Painted	n/a	n/a	n/a
Li'l Tough (Heubach)	S470ST	10212	3.25" (8.5cm)	Painted	3" (8cm)	n/a	n/a	Article: <i>Doll Artisan</i> Vol. 19 No. 5.
Sweetpea (Kestner)	S459ST	150, 6	8.75" (22cm)	8-10mm	6.25" (16cm)	n/a	CP930	Worksheet: WSABD4 Articles: <i>Doll Artisan</i> Vol. 15 Nos. 5 and 6 (pattern).
Elva (Heubach)	S418	9578	6.5" (16cm)	Painted	4.75" (12cm)	ALB9427	L13407, CP906, CP908	n/a

HALF DOLLS

Half dolls were made in Germany in the beginning of the 1900s for pincushions, tea-cozies, and powderpuffs. They decorated hat brushes, perfume bottles, trinket boxes and other objects.



Ladies with Hats

Two half dolls in mold. 2.75" and 3.25" (7-8cm) high. Article: *Doll Artisan* Vol. 25, No. 1.

S650 Ladies with Hats© half doll mold. Wt. 5lbs.



OED3080

Emilie

Half doll with molded hair with ribbon trailing down bare shoulders.

Height: 2.6" (6.7cm) high

OED3080 Emilie half doll mold.

Wt. 6 lbs.



OED3081

Lydia

Half doll with molded hair decoration and raised arm.

Height: 3 1/4" high

OED3081 Lydia half doll mold. Mold wt. 4 lbs.



S461ST

Doll by Sue Mitchell



Pierrot Half Dolls

Two half dolls in one mold. One is a Pierrot style doll incised: Germany. Blonde with yellow sugar-loaf cap, ruffled collar trimmed with blue, in clown suit. May be glazed. The other pierrot has a light blue skull cap, large white ruffled collar, black hair and brows, painted side-glancing eyes. Incised: 559.5.

S656 Pierrot Half Dolls mold.

Wt. 5 lbs.



S656

NEW!

Antique

Lady and Googly

Lady doll and Googly half doll in mold. 3.2" and 2.2" (5-6cm) high. Articles: *Doll Artisan* Vol. 24, No. 6; Vol. 25, No. 1.

S651 Lady and Googly© half dolls mold. Wt. 5lbs

Fifi and Carmen Half Dolls

Two half dolls in one mold. *Fifi*, the lady holding the dog, has sculpted brown hair and may be made as a 'hat brush'. Incised: 8909 Germany. *Carmen*, the lady holding a hat, is of German origin, incised on back: 14503 and stamped: Germany. Her coloring reflects a Spanish influence, with a yellow hat (glitter), orange red shawl, yellow hanging shirt and light green bodice. Black hair and one stroke eyebrows.

S655 Fifi and Carmen Half Dolls mold. Wt. 5 lbs.



S655

NEW!

Antique

Pattern and Leg mold for Half dolls

MP209 Pincushions, needle holder, powder puff and powder box for half dolls (**S650, S651, S655, S656**). (shown on **S651** Lady)

L9651 Leg mold (to attach to pincushion). (shown on **S651** Lady)

DOLL HOUSE DOLLS

Farmer's Family - The Farmer's Family has as its members seven wonderful half-bisque dolls. The parents, *Mutti* and *Papi* (German for mother and father),



shown on the left standing on porch; the grandparents; and the three kids. They are unusual doll house dolls, as their clothing is sculptured into the porcelain (like half-dolls), as is their hair. The Hertwig company of Thuringia, Germany, created the dolls in 1911. Painted eyes. Unmarked. Articles: *Doll Artisan*, Vol. 20, No. 5 (*Mutti & Papi* and pattern); Vol. 20, No. 6 (*Helen, Little Ella* and *Ernst* and pattern); Vol. 21, No. 1 (*Oma & Opa* and worksheet for entire family); Vol. 25 No. 3 (*Little Ella & Ernst*). **WSSD2** Worksheet for entire family. **DCP08** Costumes and body patterns. (shown on dolls)

Mutti & Papi (standing)
Papi size 6" (15cm), Mutti size 5 1/2" (14cm)
S556 Mutti and Papi head mold. Wt. 4lbs.
AL9556 Adult Arm/Leg mold. Wt. 1lb.

Opa & Oma (on swing)
Opa size: 6" (15.25cm), Oma size: 5.5" (14cm)
S557 Oma & Opa head mold. Wt. 4lbs.
AL9556 Adult Arm/Leg mold. Wt. 1lb.

Little Ella, Ernst & Helen (on steps)
Helen size: 5" (13cm), Little Ella size: 4.5" (11.5cm),
Ernst size: 3.75" (9.5cm)
S558 Helen, Little Ella, & Ernst heads mold. Wt. 3lbs.
AL9558 Child arm and leg mold. Wt. 2lbs.



Baby

Doll house doll. One-piece doll, so-called "Frozen Charlotte". Approx. doll size 1.75" (4cm)
S517 Baby© complete, 1 mold. Wt. 2lbs



Bye-Lo Baby

Doll house doll. Our most popular baby. Slightly larger than 1-1 scale. Marked: Putnam. Reference: *Small Dolls*. Jointed arms and legs. Baby bottle included in mold. Article: *Doll Artisan* Vol. 25 No. 3. Approx. doll size 2.25" (6cm)
S519 Doll House Bye-Lo© complete, 1 mold. Wt. 3lbs.



Tiny Bye-Lo

Jointed arms and legs. Article and crocheted outfit instructions: *Doll Artisan* Vol. 18, No. 1. Doll size: 2" (5cm)
S522 Baby complete, 1 mold. (Same as S501)
Pattern for baby in **DCP01** pattern.

OTHER DOLL HOUSE DOLLS AVAILABLE, BUT NOT PICTURED:

NAME	HEAD MOLD #	MARKING	DOLL SIZE	EYES	HEAD CIRC.	BODY INFO	PATTERNS	WORKSHEET/REFERENCES
Five Figures*	S500	None	Man: 5.875" (15cm); Woman: 5.63" (14cm); Child: 4.5" (11cm)	Painted	Painted hair	Arms and legs in S500 mold	DCP01	Book: <i>Doll House Dolls</i>
Four Figures (II)**	S501	None	Slightly smaller than S500. Baby: 2" (5cm)	Painted	Painted hair	Arms and legs in S501 mold.	DCP01	Book: <i>Doll House Dolls</i>
Gretchen	S503	K*R I 14	4.25" (11.4cm)	Painted		AL9503	DCP01	Book: <i>Doll House Dolls</i>
Gibson Girl	S504	None	5.875" (14cm)	Painted		AL9504	DCP01	Book: <i>Doll House Dolls</i>
Four Figures***	S507	None	Same as S500	Painted	Painted hair	AL9503, AL9504, AL9520, AL9521, A9551, L9523 L9551 L9553	DCP01, DCP05, DCP06	Book: <i>Doll House Dolls</i>
K*R 101 Marie	S508	None	5.63" (14cm)	Painted		AL9503		Book: <i>Doll House Dolls</i>
K*R 107 Carl	S509	None	5.875" (15cm)	Painted		AL9503		Book: <i>Doll House Dolls</i>
Jo	S550	S&H 11260 6/0	5.63" (14cm)	Painted		AL9521	DCP07	Book: <i>Doll House Dolls</i>
Anna	S551	None	Approx. 5.875" (15cm)	Painted		A9551, L9551	BP60	Article: <i>Doll Artisan</i> Vol. 17, N

*Father, mother, grandfather, grandmother, and child. Shoulder heads.

**Lady with molded hairdo and molded ribbon, baby in bassinet, lady with molded hair; bald-headed man. Shoulder heads.

***Man, woman, older man, child. Shoulder heads.

MODERN DOLLS

NEW!

The following dolls were all sculpted after 1970 by the world's top sculptors. Dolls are grouped by sculptor so that you can see all of their collective works. You will find babies, little girls and boys, adults, and character dolls in this section.



Doll by Caria Snels

Ellarose

Indonesian, Bali style girl sculpted by John Nissen of Denmark. Article: *DOLLS Beautiful* 2003-2; worksheet **WSMD38**.

Doll size: 27" (68.5cm), head circ.: 12.5" (32cm), eyes: 22mm

M1035 Ellarose head mold. Wt. 15lbs

MALS1035 Straight arms, straight long legs and shoulder plate mold set. (4 mold set) Wt. 43lbs.

Extra body part molds (not in set):

MA1035R Bent right arm mold. Wt. 12lbs.

MA1035L Bent left arm mold. Wt. 12 lbs.

ML1035S Short leg mold. Wt. 21lbs.

Patterns:

P524 Ellarose body pattern.

P046 Dress, vest, underwear and boots for Ellarose and other 27" Nissen dolls. (shown on doll)

P047 Indonesian costume, sarong, blouse, underwear and sandals.



Doll by Priscilla Nickerson

Sun-Yi

Modern Chinese Doll, sculpted by John Nissen.

M1038 Sun-Yi head mold. Wt. 12lbs.

Patterns:

P048 Japanese Kimono (includes undergarments, shoes, under and outer kimono and rose style obi).

P049 Chinese dress, camisole, pettupants, and shoes. (shown on doll)

JOHN NISSEN SMALL SERIES OF DOLLS: DOLL BODY PARTS

Doll size: 22.25" (56.5cm), eyes: 18-20mm, head circ.: 10.62" (27cm)
Body set for *Molli*, *Sun-Yi*, *Aruna*, *Susi* and *Inga* (and more to come!):
MALS1037 Arms, legs and shoulder plate mold set (4 molds). Wt. 40 lbs.

Set includes:

MA1037R (bent right arms)

MA1037L (bent left arms)

MS1037 (shoulder plate)

ML1037 (short straight legs)

P525 Small Nissen Body pattern (for **MALS1037**).

MB1605 Optional 16" composition body.



Doll by Glenda Martin

Little Greta

Small modern girl, sculpted by John Nissen.

Doll size: 18" (45.75cm), eyes: 16mm, head circ.: 9.25" (23.5cm)

M1034 Little Greta head mold.

MALS1034 12" Nissen body mold set (arms leg and shoulder plate mold, 4 molds) Mold set wt. 34lbs.

Patterns:

P526 Little Greta body pattern

P050 Costume pattern: 2 Girl's costumes, one boy's costume, underwear and hat.



Doll by Rosann Hinshaw

Aruna

Modern German Doll, sculpted by John Nissen.

M1041 Aruna head mold. Wt. 12lbs.

P051 Dress, bloomers and slip pattern. (shown on *Susi*)

Inga

Modern Swedish Doll, sculpted by John Nissen.

M1042 Inga head mold. Wt. 12lbs.

Susi

Modern Danish doll, sculpted by John Nissen. Article in *DOLLS Beautiful* 2003-3 or worksheet **WSMD40**.

M1052 Susi head mold. Wt. 12lbs.

P051 Dress, bloomers and slip pattern. (shown on doll)

OR

SFBISQ1052 Susi soft fired bisque (head, arms, legs, shoulder plate), patterns, china paint sachets and complete instructions.

See page 62 for more information



Doll by Jackie Rohan



P051



Doll by Helen Schaeffer

Molli

Modern South African Doll, sculpted by John Nissen.

M1037 Molli head mold. Wt. 12lbs.

Pattern coming soon.



Doll by Rosann Hinshaw



Rachel

New modern doll sculpted by Rachel Cold, USA. Article in *DOLLS Beautiful* 2003-2.

Doll size: 22.5" (57cm); eyes: 18-20mm, head circ.: 12-13

M1033 Rachel head mold. Wt. 10 lbs.

MALS1033 Rachel body mold set (arms, legs, shoulder plate molds). Wt. 43 lbs.

Patterns:

P522 Body pattern.

P044 Dress and jumper; blouse and romper; under drawers pattern. (shown on doll)



Rosalinda

Masterfully sculpted porcelain bust, Rosalinda. With her shape, Deco Dip and Glitter china paints you will have all you need to create your own masterpiece. Rosalinda is sculpted by Christina McDonald of Australia. Article: *Dollmaking* June 2001.

Head circ. 13" (33cm). Bust height: 6.5" (15.5cm).

OZ003 Rosalinda bust mold. Wt. 18lbs.



Zelma comes in 3 sizes

In 3 sizes - Soft and natural, she was fashioned after a "real-life" little girl. Sculpted by Roelie Broeksma-Müller and marked Ro 94 15.

Article: *DOLLS Beautiful* 2003-3; worksheet

WSMD20.

Doll size: 25.5" (65cm), head circ.: 12.5" (32cm), eyes: 16-18mm

M1001 Zelma head mold. Wt. 14lbs.

For porcelain and cloth body:

MS1001 Shoulder/breast plate mold. Wt. 11lbs.

MA1001 Arm mold. Wt. 16lbs.

ML1001 Leg mold. Wt. 16lbs.

Patterns:

BP82 Body.

MP55 Dress and pinafore.

Alternate bodies:

FB19S 19" Composition body.

or

MODBOD20LL 20" ModBod body.

MA9001 Girl arm mold for ModBod20.

Little Zelma

21" version of Zelma

Doll size: 21" (53cm), head circ.: 11.75" (30cm), eyes: 14mm

Fits on compo body **MB160S**.

M1006 Little Zelma head mold. Wt. 13lbs.

CP2400 Lauren's dress pattern. (see MB160 body section for photo)

Zelmina

18" version of Zelma. Article: *Dollmaking* Dec 2003

Fits **ModBod14** and **ALB9873**.

Doll size: 18" (46cm), head circ.: 10.5" (26.5cm), eyes: 12mm

M1025 Zelmina head mold. Wt. 9lbs.

MA9003 Lower arms mold for ModBod14. Wt. 6lbs.

CP931 Angel's dress and underwear pattern. (for

ALB9873 and **MB140S**)

Other patterns: See **ModBod14**.

Roslyn

Beautiful little girl sculpted by Christina McDonald. Same face as bust, Rosalinda. Article: *DOLLS Beautiful* 2003-1.

Doll size: 24" (61cm), head circ.: 12"-13", eyes: 16-18 mm

M1032 Roslyn head mold. (3 piece mold). Wt. 16 lbs.

MALS1032 Roslyn body mold set (arms, legs, shoulder plate molds). Wt. 51 lbs.

Patterns:

P045 Costume pattern. (shown on doll)

P523 Body pattern.



Giselle

Two sizes - Little girl sculpted by Dutch artist, Roelie Broeksma-Müller. Open or closed mouth.

Article *DollPro* Feb/Mar 1997, Feb/Mar 1998;

Dollmaking Aug 2002. Fits cloth body or **MOD-BOD20**

Doll size: 22.25" (56.5cm) on cloth body, 25" (60cm) on ModBod; head circ.: 12.25" (31cm); eyes: 16-18mm

M1014 Giselle head mold. Wt. 16lbs.

MALS1014 Arms, legs, shoulder plate mold set (5 molds). Wt. 9lbs.

P512 Cloth body pattern

P018 Dress pattern (shown on doll)

Giselle II

Smaller version of Giselle. - Doll size: 18" (45cm), head circ.: 10" (25cm), eyes: 12mm

M1009 Giselle II head mold. Wt. 8lbs.

MODBOD14 14" Modern Body.

For patterns, see **ModBod14**.





Doll by Ron Booker

MP65

Eleanor

D.A.G. Mold - Magnificent modern lady doll mold sculpted by Ron Booker, *Eleanor of Aquitaine*. Shoulder-head mold with cloth body, porcelain arms and legs.

Articles: *Dollmaking* April 2001, Feb 2002. Complete instruction book (**ELEANORBK**).

Doll size: 20" (51cm), head circ.: 9" (23cm), eye size: 14mm

DAG000 Eleanor shoulder-head mold

A9858 Arm mold.

L9858 Leg mold.

Patterns:

BP95 Body pattern

MP65 Eleanor's complete Royal Costume including shoes, stockings, crown and chemise. (shown on doll)



Doll by Ron Booker

M4004

Harte

Finally, an escort for your Estella. Sculpted by Ron Booker. He is wonderfully sculpted with a full chest and detailed masculine hands. Articles: *DollPro* Apr/Jun 1999; *Dollmaking* Apr 2000 (Leonardo Da Vinci) Apr 2001 (Lion King), Jun 2001 (Phantom), Jun 2002 (Native American). Doll size: 22.5" (57cm), head circ.: 8" (20.25cm), eyes: 10-12mm

M4004 Harte shoulder-head mold. Wt. 25 lbs.

MAL4004 Arms and legs molds (2 molds). Wt. 11 lbs.

Patterns:

P519 Body pattern with variations.

P032 Suit, cloak and underwear pattern. (shown on doll)



Doll by Ron Booker

S857

Estella

Elegant and charming modern lady sculpted by Ron Booker. Exquisite facial features, slightly turned head, slim neck, delicate shoulders and feminine bust line. Arms bent at elbows and wrists. Legs start at knee and end with gently pointed toes. Painted or glass eyes, pierced ears. Articles: *Doll Artisan*, Vol. 17, No. 1; *DollPro* April/June 1997, April/June 1998, April/June 1999 (bust only); *Dollmaking* Apr 2000 (*Mona Lisa*), Feb 2002, Aug 2002. Worksheet: **WSMD18**.

Doll size: 23" (58cm), head circ.: 8.25" (21cm), eyes: 12mm

S857 Estella shoulder-head mold. Wt. 16lbs.

A9857 Arm mold. Wt. 15lbs.

L9857 Leg mold. Wt. 17lbs.

Patterns:

BP75 Body pattern.

MP46 1895 Evening gown, underwear pattern. (shown on doll)



Doll by Ron Booker

S854/S884

Cherry Ripe

Comes in 2 sizes - Sculpted by Ron Booker, this sweet child is painted in the Dimensional Doll Painting (**DDP**) Technique. Hands are positioned to rest in her lap, sculpted bent knees allow her to sit. Painted or glass eyes. Worksheet for Modern Dolls: **WSMD16**. Articles: *Doll Artisan*, Vol. 17, No. 2; *DollPro* August/September 1995. Worksheet for DDP instructions: **GIMI**.

Doll size: 15.5" (39cm) sitting, 19" (48cm) total, head circ.: 9.5" (24cm), eyes 12-14mm

S854 Cherry Ripe head mold. Wt. 6lbs.

S9854 Shoulder plate mold. Wt. 5lbs.

A9854 Arm mold. Wt. 7lbs.

L9854 Leg mold. Wt. 11lbs.

Optional: fits compo. bodies: **FB12S**, **FB12JS**.

Patterns:

BP76 Body

MP47 Cherry Ripe costume, dress, mob cap, underwear, slippers (shown on doll)

Cherrette

Doll size: 12" (30.5cm), head circ.: 7.5" (19cm), eyes: 12mm

S884 Cherrette head mold. Wt. 4lbs.

MB925S Modern Compo. Body.

CP2601 Dress, cape, bloomers pattern.

(see MB925 body section for photo)

Oliver

Two sizes - Handsome young lad; sculpted by Tom Francirek. Eyes painted or glass. Worksheet: **WSMD19**. Articles: *Doll Artisan* Vol. 17, No. 5; *DollPro* Winter 1995, Jul/Aug 1998.

Doll size: 20" (51cm), head circ.: 10.25" (26cm), eyes: 14mm

S881 Oliver head mold. Wt. 8lbs.

S9881 Shoulder plate mold. Wt. 6lbs.

A9881 Arm mold. Wt. 3.5lbs.

L9881 Leg mold. Wt. 12lbs.

Patterns:

BP79 Body

MP54 Mid-Victorian costume, knickers (shown on doll)

Optional: fits compo. body **GB15S**.

Little Oliver

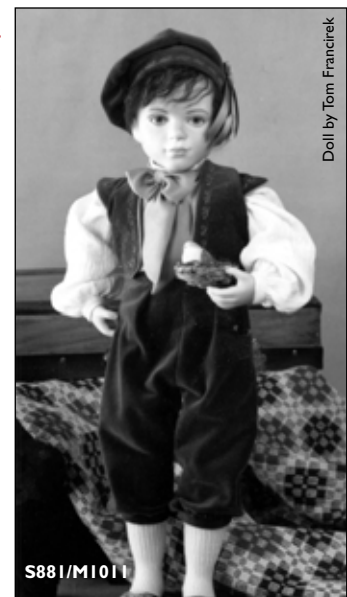
Fits Angelica's body. Reference: *DollPro* Nov/Dec/Jan 1997.

Doll size: 18" (45.75cm), head circ.: 8.5" (21.5cm), eyes: 10-12mm

M1011 Little Oliver head mold. Wt. 6lbs.

MALS1005 Arms, legs, shoulder plate mold set (3 molds). Wt. 31lbs.

P508 Soft body pattern



Doll by Tom Francirek

S881/M1011



Vito & Coco

This unique smiling character, Vito and his lifelike Capuchin monkey, Coco, were sculpted by Lorrie Messina. Featured here as an organ grinder, Vito is also ideal as a Father Christmas. Suitable for either painted or glass eyes. Worksheet for Modern Dolls: **WSMD25**, Articles: *DollPro* Feb/March 1996, *DollPro* Sept/Oct 1996.

Doll size: 23" (58cm), head circ.: 9.75" (24.75cm), eyes: 12mm

M4003 Vito shoulder-head mold. Wt. 14lbs.

MAL4003 Arms and legs mold (2 molds). Wt. 19lbs.

M7001ST Hand-organ box and lid mold. Wt. 11lbs.

M7002ST Coco monkey mold (3 molds). Wt. 4lbs.

Patterns:

P505 Soft body for Vito

P009 Organ grinder costume (shown on doll)



Kerstin

Three sizes - Kerstin poses for her family portrait, but not without her favorite bear! Beautiful girl by doll sculptor Thea Thorvaldson. She fits on a soft cloth body with porcelain shoulder plate, arms and legs. Use with an armature for different poses; sitting, standing, and playing! Painting technique and articles in *DollPro* July/August 1998 and February 1999 and *Dollmaking* Dec 2000.

Doll size: 30" (76cm), head circ.: 14.25" (39.5cm), eye size: 18-20mm

M1026 Kerstin head mold. Wt. 16lbs.

MALS1026 Shoulder plate, arms and legs mold set (5 molds). Wt. 86lbs.

Patterns:

P516 Body Pattern.

P028 Dress Pattern. (shown on doll)

Kerstina

Doll size: 24" (61cm), head circ.: 12.25" (31cm), eyes: 16mm

M1027 Kerstina head mold.

MALS1027 Shoulder plate, arms, legs mold set.

Patterns:

P517 Body pattern.

P030 Dress pattern. (shown on doll)

Li'l Kerstina

Doll size 19" (48cm), head circ.: 10.25" (26cm), Eyes: 14mm

M1028 Li'l Kerstina head mold.

MALS1028 shoulder plate, arms, and legs mold set.

Patterns:

P518 Body pattern.

P031 Dress pattern. (shown on doll)



Himself

Ingenious, versatile and charming character doll sculpted by Tess Godfrey. Create a character you enjoy such as Santa Claus, a clown, a goblin, or peddler. Flange neck. Painted or glass eyes. Articles: *DollPro* Nov/Jan 1998/99 (Irish gentleman); *Dollmaking* June 2000 (Bishop), Aug 2001 (Jester), Oct 2002 (Halloween witch); *DOLLS Beautiful* 2003-4 (Mrs. Claus)

Doll size: 21" (53cm), head circ.: 12" (30cm), eyes: 14mm

OZ001 Himself head mold. Wt. 11lbs.

OZAL9001 Arms and legs mold set (4 molds).

Wt. 31lbs.

Patterns:

P515 Body

P027 Santa suit and underwear

P026 Folk suit. (shown in photo)



Hanna

Comes in two sizes - Sweet little girl with molded hair and bonnet sculpted by Michele Severino. Very unique shoulder-head doll has the top of her

slip sculpted onto her chest plate with molded ribbon and bow. Open-closed mouth, glass or painted eyes. One leg is bent at knee. One arm can hold flowers, while the other holds her dress as she dances her way merrily into your heart. Article: *DollPro* July 1998. Worksheet for Modern Dolls: **WSMD12**.

Doll size: 18.5" (47cm), head circ.: 11.5" (29cm), eyes: 16-18mm

S855 Hanna shoulder-head mold. Wt. 19lbs.

A9855 Arm mold. Wt. 12lbs.

L9855 Leg mold. Wt. 19lbs.

Patterns:

BP69 Body

MP40 Hanna's dress and underwear (shown on doll)

Little Hanna

Fits on the same body mold as for Molly. Painted eyes, sculpted bonnet. Article: *Dollmaking* April 2002

Doll size: 8" (20cm)

M3003 Little Hanna head mold. Mold Wt. 4lbs.

MALB3002 Storybook body mold.

Patterns:

P034 Dress, underwear and shoe pattern. (shown on Molly)

P043 Jumper suit and sandals pattern. (shown on doll)





👉 Molly

An all-bisque modern doll sculpted by Theo Menzenbach of Germany. This doll is a perfect start to your storybook children series. She is great as Hansel and Gretel, Miss Tuffet, Little Boy Blue or Little Red Riding Hood! Molded hair, painted or glass eyes, open-closed mouth and easy all-bisque body to assemble.

Article in *Dollmaking* March 2000; worksheet: **WSMD33**.

Doll size: 8" (20cm)

M3002 Molly head mold. Wt. 3lbs.

MALB3002 Storybook body mold set (4 molds). Wt. 10lbs.

Patterns:

P034 Dress, underwear and shoe pattern (*shown on doll*)

P043 Jumper suit and sandals pattern. (*shown on Little Hanna*)



Annika

Comes in 3 sizes - Little girl, sculpted by German artist, Theo Menzenbach. Articles: *DollPro* Nov/Dec/Jan 1998/99; *Dollmaking* August 2000; worksheet: **WSMD29**.

30" version of Annika

Doll size: 30" (76cm), eyes: 22-24mm, head circ.: 16.25" (41cm)

M1002 Annika head mold. Wt. 24lbs.

MS1002 Shoulder plate mold. Wt. 11lbs.

MA1002 Arms mold. Wt. 18lbs.

ML1002 Legs mold. Wt. 27lbs.

Patterns:

P503 Cloth body pattern.

P007 Dress pattern (*shown on doll*)

Optional: Fits **MB21.55** compo. body.



👉 Angel

Innocent and angelic child, sculpted and created by the team of Bunny Morris and Paul Jackson. Painting references: *Beautiful Dolls Made Easy* (book); *Doll Artisan*, Vol. 15, No. 6; *DollPro* April/May 1995. Fits two bodies created especially for her: compo body **MB140S** or body mold **ALB9873**.

Doll size: 18" (46cm), head circ.: 10.25" (26cm), eyes: 16mm

S873 Angel head mold. Wt. 7lbs.

Patterns:

P029 Capri costume pattern. (*see MB140 body section for photo*)

CP931 Summer dress and underwear. (*shown on doll*)

CP2301 Dress and pinafore (*see MB140 body section for photo*)

CP2302 Winter outfit (*see MB140 body section for photo*)

Eve 🐣

All-bisque doll with feminine body, gracefully bent arms, and slightly bent right leg with pointed toe. One of our charming Enchanted Dollies, created by Bunny Morris and Paul Jackson. Articles: *Doll Artisan*, Vol. 15, No. 3, Vol. 16, No. 6; *Dollmaking* Aug 2000, Dec 2002; worksheet for Modern Dolls **WSMD10** or **WSMD34**

Doll size: 15.5" (40cm), head circ.: 7" (18cm), eyes 14mm

S870 Eve head mold. Wt. 3lbs.

ALB9870 Body complete, 3 molds. Wt. 25lbs.

Patterns:

CP928 Wedding gown, veil, slippers, underwear (*shown on doll*)

P036 Eve Party Dress

P038 Eve Peasant Dress



P039



P036

P038

Little Annika

24" version of Annika. Article: *Dollmaking* Aug 2002.

Doll size: 24" (61cm), head circ.: 14" (35.5cm), eyes: 14mm

M1018 Little Annika head mold.

MA9001 Lower Arm mold for **ModBod20**

MODBOD20LL 20" ModBod. You can also purchase the **ModBod20** without lower vinyl legs and purchase the leg mold **ML9001**.

Patterns:

P018 Dress pattern. (*shown on Giselle*)

MP55 Dress and pinafore pattern. (*shown on Zelma*)

Annikita

18.5" version of Annika. Fits **ModBod14** body. Doll size: 18.5" (47cm), head circ.: 9.5" (24cm), eyes: 14mm

M1007 Annikita head mold. Wt. 9lbs.

MA9003 Lower arm mold for **ModBod14**

Patterns: See **ModBod14** section.



Dolls by Pamela Lembo

Tanze & Odelle

The original Enchanted Dollies, created by Bunny Morris and Paul Jackson. Both heads fit a slim all-bisque body with gracefully bent arms and legs. Fully bent left and right legs are available for pretty posing, dancing, kneeling, flying and other enchanted activities. Articles: *Doll Artisan* Vol. 14, No. 3; Vol. 15, No. 2; Vol. 16, No. 4.

Doll size: 10.5" (26cm), head circ.: 5.5" (14cm), eyes: 8mm

S864 Tanzey (open eyes) head mold. Wt. 2lbs.

S865 Odelle (closed eyes) head mold. Wt. 2lbs.

ALB9864 Body complete, 4 molds. Wt. 18lbs.

L9864RX Right leg mold (fully bent). Wt. 4lbs.

L9864LX Left leg mold (fully bent). Wt. 5lbs.

Pattern: CP921 Ballerina outfit, girl's dress, with underwear. (shown on Odelle)

Tiny Fairies

Petite versions of *Tanze* and *Odelle*; brought down to 1"-1' scale, with the same magical qualities. Two heads in mold (one with open eyes, one with closed). Body mold set (sold separately) includes two bent and two straight arms, two torsos, two fully bent and two straight legs, allowing for a total of 32 different fairy combinations. Articles: *Doll Artisan*, Vol. 16, No. 1 (project) and No. 4 (photos only).

Doll size: 4" (10cm) kneeling, 6"

(15cm) standing, eyes: 2mm

S871 *Tiny Fairies* heads mold. Wt. 1lbs.

ALB9871 Body complete, 5 molds. Wt. 6lbs.

Doll is sitting in the "Antique Shoe", available separately.



Dolls by Pamela Lembo



Dolls by Pamela Lembo

Whispers

Delicate little lady to make as a fairy, princess, or a child. One-piece figure with molded hair and painted eyes. One of the lovely Enchanted Dollies. Two dolls in mold. Articles: *Doll Artisan*, Vol. 14, No. 6; *DollPro* Nov/Dec 1996, *Dollmaking* Dec 2001.

Doll size 3.75" (9.5cm)

S869 *Whispers* mold. Wt. 4lbs.



Dolls by Bunny Morris

Poppets

Tiny versatile, all-bisque dolls. Mold price includes: Two heads, six arms, five legs and an upper and lower torso strung with one piece of elastic. Change arms and legs in seconds. Painted eyes. Includes Poppet Handbook. Articles: *DollPro* April/May 1995, April/June 1996, Nov/Jan 1998/99, Feb/Mar 1999.

Doll size: 5" (12.75cm), head circ.: 3" (7.5cm)

M3001ST Poppet mold set (6 molds). Wt. 9lbs.

Patterns:

P001 Wardrobe (shown in photo)

P002 Knitted dress, jacket, beret (shown in photo)

P003 Sleeveless knit dress, hat, panties (shown in photo)

Stringing instructions *DollPro* April/May 1995



Pattern P001

NEW! Jeannie & Alan/Alanna

Alan/Alanna, baby doll, and *Jeannie*, little girl, are playmates. Both dolls sculpted by Beverly Hamilton Blyth of Australia. Baby can be done as boy (*Alan*) or girl (*Alanna*) with painted or glass eyes. Both doll heads in one mold. Articles: *DollPro* Feb/March 99; *Dollmaking* Dec 2001, Feb 2002, Apr 2002.

Alan/Alanna

Doll size: 8" (20cm), head circ.: 6.75" (17cm), eyes 8mm

Jeannie

Doll size: 10.5" (26.5cm), head circ.: 6.75" (17cm), eyes: 10-12mm

OZ002 *Jeannie & Alan/Alanna* head mold. Wt. 8 lbs.

ALB9412 All-Bisque body mold for Alan/Alanna.

ALB9008 All-Bisque body mold for Jeannie or **MB8S** 8" Modern Compo. Body for Jeannie

Patterns:

P033 Dress for Alanna. Dress, chemise and panties for Jeannie. (shown on dolls)

CP2500 Dress and underwear pattern for Jeannie. Use with porcelain body **ALB9008**. (see **MB8** in body section for photo)



Dolls by Nan Hawkes



Dolls by Jackie Rohan

Billy & Bobby Bumbles

Darling little *Bumbles* come with two different expressions: closed eyes and opened. Created by the team of Bunny Morris and C. Paul Jackson. Painted eyes. Both have dimpled, baby-fat bodies, and they make perfect children or angels; just attach a tiny pair of wings (included with the mold set). The detailed molding of the two heads, chubby one-piece body, wings and a base make this set ideal. Article: *DOLLS Beautiful* 2003-1.

Doll size: 5.5" (14cm)

M6001ST *Bumbles* mold set (5 molds). Wt. 18.5lbs.



MP24



S824

My Little Princess

Favorite sleeping baby now in much reduced size. Two precious babies in one mold, one with open eyes, one with closed eyes. Flange neck. Beautiful twins to make as a pair.

Article: *Doll Artisan* Vol. 15, No. 2.

Doll size: 7" (18cm), head circ.: 4 3/4" (12cm)

S832 *My Little Princesses* head mold. Wt. 4lbs.

A9832 Arm mold. Wt. 1lb.

Pattern: **BCP20** Body and costume (shown on doll)



S832

Doll by Thu Tam Freeman

My Princess

Life-sized and easy-to-make sleeping baby. Created especially for the beginning dollmaker by Joyce Wolf, this doll has defined lips and fingernails for easy china painting. Fill her body with Baby Beans for a doll that feels just like a real baby. Flange neck. Worksheet **WSMD5** Article: *Doll Artisan* Vol. 15, No. 6.

Doll size: 19" (48 cm), head circ.: 12" (30 cm)

S824 *My Princess* head mold. Wt. 18lbs.

A9824 Arm mold. Wt. 5lbs.

Patterns:

BP56 Body

BP74 Body with teddy joints

MP24 Pram suit

L12018 Infant dress and petticoat.

for photo see **BB11.5** body section, same style as: **L12012**

LH13 Bonnet

LS17 Christening shoes

P037 Boy and girl outfit. (shown on doll)

OTHER MODERN DOLLS AVAILABLE, BUT NOT PICTURED:

NAME	HEAD MOLD #	DOLL SIZE	EYES	HEAD CIRC.	BODY INFO	PATTERNS	WORKSHEET/REFERENCES
Alexis	M1003	12" (58cm)	14mm	11.25" (28cm)	MALS1003	P506, P507, P011	Worksheet: WSMD30 Article: <i>DollPro</i> Jul/Aug 1996
Angelica	M1005	19" (48cm)	16mm	9.5" (24cm)	MALS1005	P508, P012	Worksheet: WSMD31 Article: <i>Dollmaking</i> Dec 2000
Axel	SC300	20" (51cm)	Painted	9" (23cm)	SC301, SC304, SC311	BP32, MP08, MP32, BCP16	Article: <i>Dollmaking</i> Dec 1999
Candy (Streetkid)	M1017	22" (56cm)	22mm	13.75" (35.5cm)	MALS1015	P511, P015	Articles: <i>DollPro</i> Nov/Jan '96/97; Jul/Aug '97; Apr/Jun '99
Capri	M1021	19" (48cm)	12-14mm	10" (25cm)	ALB9873, MB1405	CP931, CP2301, CP2302	Article: <i>DollPro</i> Nov/Jan 1999
Carolyn Bebe	S846ST	19" (48cm)	18-20mm	12.5" (32cm)	Set listed includes head and body molds	BP87, MP60	Article: <i>Doll Artisan</i> Vol. 18, No. 6
Charlie (Streetkid)	M1016	22" (56cm)	22mm	13.75" (35.5cm)	MALS1015	P511, P016	Articles: <i>DollPro</i> Nov/Jan '96/97; Jul/Aug '97
Connie (Streetkid)	M1015	22" (56cm)	22mm	13.75" (35.5cm)	MALS1015	P511, P015	Articles: <i>DollPro</i> Nov/Jan '96/97; Jul/Aug '97
Daisy Garland	M4001ST	30" (76cm)	22mm	12.5" (32cm)	Set listed includes head and body molds	P502, P005	Worksheet: WSMD24 Article: <i>Dollmaking</i> Oct 2000; Jun 2002
Danru	M2003	15" (38cm)	14mm	10.5" (26cm)	MAL2003	P514, P020	Article: <i>DOLLS Beautiful</i> 2003-1
Fawn	M1004	24" (61cm)	18mm	11.5" (32cm)	MALS1003	P506, P024, P025	Article: <i>DollPro</i> Jul/Aug 1997
Goldy	M1031ST	18" (45cm)	14mm	9.5" (24cm)	MA9003, MODBOD14	P035	Articles: <i>Dollmaking</i> Dec '99 (Goldilocks); June '00 (Rose Fairy)
Jasmine II	S828	26" (66cm)	18mm	12" (30cm)	MB1905, OED3075, MODBOD20	DP1012 (for OED3075)	Article: <i>DollPro</i> Feb/Mar 1999
Kata	M2001	23.5" (60cm)	18-20mm	14.25" (36cm)	MA2001, ML2001L/R	BP93, MP56	Worksheet: WSMD21 Article: <i>DollPro</i> Jul/Aug 1996
Lisbeth	S847	9.25" (23.5cm)	8mm	6" (15cm)	ALB9847	CP941	Article: <i>Dollmaking</i> Jun 2001
Little May	M1012	18" (45.75cm)	14mm	9" (23cm)	MALS1005	P508, P012	Worksheet: WSMD14 Article: <i>Dollmaking</i> Oct '02
Little Swiss Heidi/Peter	M1013	18" (45.75cm)	12mm	9.5" (24cm)	MALS1005	P012, P508	Worksheet: WSMD11 Article: <i>Dollmaking</i> Jun 2002
Meili	M1020	24" (61cm)	16-18mm	12.5" (31cm)	MAL2003	P513, P019	Article: <i>DOLLS Beautiful</i> 2003-1
Little Mika	DAG2001-I	16" (41cm)	12mm	9.5" (24cm)	DAG2001-A, LL, RL	P521, P042	Worksheet: WSMD35
My Little Angelica	M1019	12" (30cm)	Painted	6" (15cm)	MALS1019	P014, P510	Article: <i>DollPro</i> Nov/Jan 1997
Sapphire	M5001	12" (30cm)	12mm	6.75" (17cm)	MALS5001, MB925S	CP2601	Worksheet: WSMD23
Swiss Heidi Peter II	M1023	18.5" (47cm)	14mm	9.5" (24cm)	MA9003, MODBOD14	P023	Worksheet: WSMD11 Article: <i>Dollmaking</i> Jun 2002