

MODERN DOLLS

ERIK

ITEM#: K801

Young Scandinavian boy (or girl) sculpted by
John Nissen. Glass or painted eyes.

Doll size: 22.25" (56.5cm)
Head circ.: 10.6" (27cm)
Eyes" 18—20mm

Fits Body mold: MALS1037
Body pattern: P525



CHINA PAINT

MODIFIER

ITEM# 200M

NEW!!! Magic in a bottle! Add a tiny bit of this to your china paint to create a smooth satiny matt opaque finish. Perfect for ethnic overall washes when you don't want too much shine from multiple firings or for a smooth application on lips.



Article in DOLLS Beautiful 2011-2, Summer issue.

PORCELAIN SLIP

SNOW WHITE

ITEM# PSL500

NEW!!! It's what we've been waiting for!

Snow White porcelain slip has been developed by dollmakers in conjunction with our Ceramic Engineer for a very white porcelain that dollmakers have been asking for. It behaves differently from our signature slips but the results are oh-so spectacular!

Try some today!

WWW.NEWYORKDOLLPRODUCTS.COM

MINI MOLD CATALOG 2011



New York Doll Products, Inc.
Otego, New York
Email: info@newyorkdollproducts.com

www.newyorkdollproducts.com



Welcome to NYDP porcelain dollmaking!

New York Doll Products began manufacturing in April 2009 and we have been very busy! Take a look at all the new molds available! And we have more new products on the way very soon.

NYDP also manufactures:

Porcelain Slip:

- Lady White
- French Bisque
- Pure White
- Pearl White
- Dresden
- Snow White



Composition Doll Bodies

French, German, Baby, Lady, Modern, Mechanical

China paints

Doll & Decorator colors. Most are LEAD-FREE

And more!

**For a referral to a Distributor or to ask a question:
Tel: 607-441-0434**

WWW.NEWYORKDOLLPRODUCTS.COM

CHINA & PARIAN DOLLS



Lucy

Item#: K610

Sweet young girl parian attributed to Simon Halbig. Beautifully molded hair with braids and bows.
Approx doll size: 20"



Arm: KA9610 Shapely arm with detailed hands
Leg mold: KL9610 Leg with flat boot.

Lacey

Item#: K612

Attributed to Hertwig & Co. circa late 1890's, this beautifully detailed shoulderhead has molded hat, hair, beaded necklace and lace trimmed blouse. Originally advertised as one of the "International Series".

Doll size: 12—14"

Arm mold: A9605

Leg mold: L9639



Louise

Item#: S703

Known as a slit-head china (biedermeier-type) and is dated from the late 1850's.

Painted blue eyes.

Doll size: 12 5/8" (30.48cm)

Arm mold: A9378 (or A9605)

Leg mold: L9639

Body pattern:

Available from DAG

Item #PADBCPo2



CHINA & PARIAN



Isabel
Item#: K603

China or parian with beautiful molded hair and snood. Doll size: 20—21"

Arm mold: A9610

Leg mold: KL9610 leg with flat boot



Mary Augusta
Item#: K604

China or parian shoulderhead with molded hair and soft curls decorated with bows. Doll size: 18" (45.7cm)

Arm mold: A9610 Leg mold: L9609



Parthenia
Item#: K607

Elegant classic lady may be made as a china or parian. Unique Grecian style molded hair. Pierced ears. Doll size: 12—14"
Arm mold: A9605 Leg mold: L9636



Highland Mary II
Item#: K611

Circa 1880. May be made as a Parian with glass or painted eyes. Also found as china. Doll size: 20"

Arm mold: A9610

Leg mold: KL9610 leg with flat boot

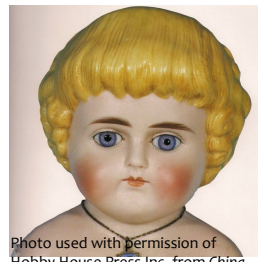


Photo used with permission of Hobby House Press Inc. from China, Parian & Bisque German Dolls ©Hobby House Press and Lydia Richter

FRENCH DOLLS

Photo courtesy Sheryl Williams



AT Sharice

Item# K105

Marked A11T. Pierced ears.
Doll size: 18.5"

Also available :
Composition body: FB16S
KA9105 Lower arm mold to fit FB16S
KALS9105 Arm, leg, shoulderplate mold set



Tete Jumeau Marielle

Item#: K104

Doll size: 15.5" (39.4cm)
Head circumference: 9" (23cm)

Also available:
Composition Body: FB12S



Princesse Jumeau France Item#: K101

Marked 71 Unis France 149, 306 Jumeau
Flirty/Sleep eyes.
Doll size: 15.75"
Head circumference: 9 7/8"

Also available:
Composition body: FB14JJS

FRENCH DOLLS

Small Milettes



Circle Dot Bru Estellette

Item#: K102

Doll Size: 8.25" (21cm)
Head circ: 5.25" (13.3cm)
Eye size: 6—8mm



A14T Nellette

Item #: K103

Doll Size: 8.25" (21cm)
Head circ: 5.25" (13.3cm)
Eye size: 6—8mm

GERMAN DOLLS



Martina

Item #: S390

Very desirable Simon Halbig marked SH16 949. Open or closed mouth. Pierced ears.
Doll size: 17" (43.2cm)
Head circumference: 9"
Eye size: 14—16mm

Composition body: GB13S

CHINA & PARIAN DOLLS

Amelia

Item#: K601

Shoulderhead parian attributed to Hertel, Schwab & Co., Stutzhaus/Thuringia Germany approximately 1860. Painted eyes, molded hair with braids.
Doll size: 21"

Arm mold: A9633

Leg mold: L9621



Sylvia

Item#: K605

Parian from Alt, Beck & Gottschalck. Shoulderhead with pale complexion, beautiful modeled hair with black molded ribbon. Modeled Bodice with necklace. Painted eyes. Pierced ears. Doll size: 19" (48.3cm)

Arm mold: A9610

Leg: L9609 Leg with molded boot
L9610 Leg with flat shoe

Spill Curl Girl

Item#: K606

Shoulderhead china with long modeled 'finger curls' black modeled hair band. Circa early 1870's by Alt, Beck & Gottschalck. Pink skin tone. Hair can be black or light brown known as café-au-lait.

Doll size: 21" (53.3cm)

Arm mold: A9633

Leg Mold: KL9610

